

## PERFORMANCE SPECIFICATIONS\*

Reflector Material	Cast Magnesium Alloy	Cast Magnesium Alloy
Mounting Hardware	Stainless Steel	Stainless Steel
Gain	18 dBi	24 dBi
Input Frequency**	2100 - 2700 MHz	2100 - 2700 MHz
-3 dB Beam Width	14°	7.5°
Cross Polarity Rejection	>23 dB	>26 dB
Front to Back Ratio	>23 dB	>31 dB
Impedance @ Output	50 OHMS	50 OHMS
Elevation Adjustment	60° in 10° Increments	Optional
VSWR (Average)	1.3:1 @ 2100-2700 MHz	1.3:1 @ 2100-2700 MHz
Overall Size (Inches)	16 x 20 x 15 (40.64 x 50.80 x 38.10 cm)	23.5 x 39.25 x 15 (60.95 x 91.44 x 38.10 cm)
Weight	2.7 lbs. (1.22 Kg)	5.4 lbs. (2.43 Kg)
Mounting	1 - 2 O.D. Mast (2.54 - 5.08 cm)	1 - 2 O.D. Mast (2.54 - 5.08 cm)

\*Specifications subject to change without notice.

\*\*Consult factory for different input frequencies.

潤泰實業有限公司  
台中市太原北路 160 號  
Tel: 04-2955093  
Fax: 04-2963189

# RECEIVE ANTENNAS

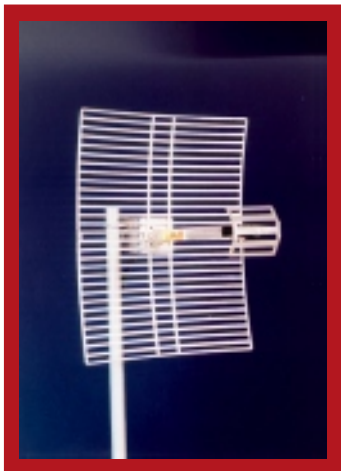
## Models 18 and 26

### HIGH PERFORMANCE ANTENNAS

The antenna is the first piece of equipment to intercept the signal at the receive site. Therefore, antenna performance is critical in providing quality reception.

Conifer's 21 years of experience has led to a state-of-the-art antenna design. The performance specifications have been verified by independent testing in an anechoic chamber. Using nonferrous materials, the antennas are well suited to environments worldwide.

**MODEL  
18T-2127\***



**Model 18** Cast Magnesium Alloy

**Model 26** Cast Magnesium Alloy

### FEATURES

Lightest weight and most durable grid antennas with low wind resistance.

Die-cast 18 and 26 manufacturing processes provide unmatched uniformity resulting in consistently high performance from every antenna.

Magnesium Alloy is superior to anodized aluminum and weighs 33% less.

Antennas and mounting hardware are manufactured with nonferrous material which will not rust. Magnesium alloy and stainless steel.

No need for mechanical adaptors to mount the feed - one feed fits both antennas.

Antennas can be mounted in horizontal, vertical, or 45° polarity.

Easy installation.

Antenna elevation adjustment up to 60°.

Compact packaging for shipment.

Five Year Limited Warranty.  
Contact factory for details.

**MODEL  
26T-2127\***



\*U.S. Patent 5,191,350

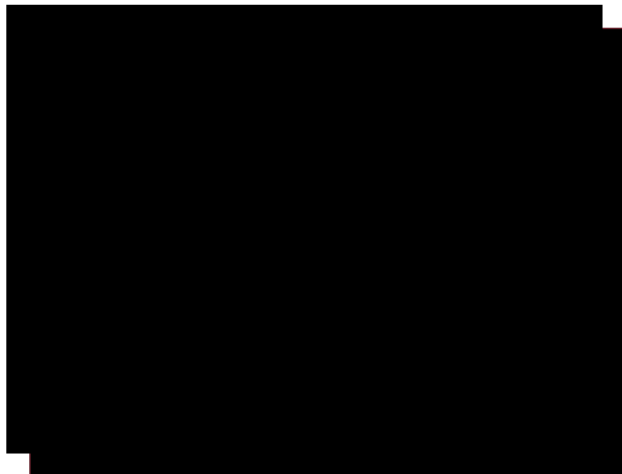
潤泰實業有限公司  
台中市太原北路 160 號  
Tel: 04-2955093  
Fax: 04-2963189

Conifer power supply/inserter units meet UL or TUV specifications and feature unique current limiting circuitry which will protect the power supply under any short circuit or overload conditions. If these conditions are present, the current limiter will shut down the power supply until the overload or short circuit is corrected and then automatically return it to normal operating status.

Each power inserter is sweep tested at RF frequencies to verify low VSWR and minimum insertion loss and each power supply is tested under fully loaded conditions to verify voltage and current capability.

A 120V and a 220V model are available depending on the operator's market requirements.

<u>MODEL</u>	<u>INPUT</u>	<u>OUTPUT</u>	
PS-1341	120VAC 60Hz 15W	24VDC 300mA	U.S. plug
PS-2342	220VAC 50/60Hz 10W	24VDC 300mA	European two-pin plug



**PS-1341**



**PS-2342**

潤泰實業有限公司  
台中市太原北路 160 號  
Tel: 04-2955093  
Fax: 04-2963189

The UC-1010 Upconverter is designed to generate microwave signals from superband input signals. It is most useful for bench testing and demonstration purposes.

## SPECIFICATIONS

Input Frequency	222 - 408 MHz
Gain	10 dB
Noise Figure	4.0 dB
L.O. Specifications	
Set Point Accuracy	2278.000 MHz < $\pm 15$ KHz
Frequency Stability (-40° C to 60° C)	$\pm 30$ KHz
RF Input Levels	
Maximum	+27 dBmv
Maximum per Channel (w/31 Channels)	-3 dBmv
Minimum Input for 45 dB S/N	-10 dBmv
Response Specifications	
Output Frequency	2500 - 2686 MHz
Flatness	$\pm 1.5$ dB Across Band .5 dB per Channel
RF Output Levels	
Maximum	-13 dBm
Maximum per Channel (w/31 Channels)	-42 dBm
Spurious Outputs	
Out of Band	-55 dBm
I.F. Input	-31 dBm
Power Input	-45 dBm
Power Supply	
Voltage Required	+15 to 24 Vdc
Current Required	155 mA
Connectors	
I.F. Input and Power Input	F Type
RF Output	N Type

\*Preliminary specifications subject to change without notice.

\*\*Consult factory for different input/output frequency conversion options.

潤泰實業有限公司  
 台中市太原北路 160 號  
 Tel: 04-2955093  
 Fax: 04-2963189

## MDS FREQUENCY ASSIGNMENTS

	Bandwidth (MHz)	CARRIER in MHz		
		Video	Color	Audio
MDS Channel 1	2150-2156	2154.75	2151.17	2150.25
MDS Channel 2	2156-2162	2160.75	2157.17	2156.25
MDS Channel 2A	2156-2160			

NOTE: Video & Audio carriers are inverted

## MMDS/ITFS FREQUENCY ASSIGNMENTS

Group Channel	Bandwidth (MHz)	CARRIER IN MHz			Response Frequency
		Video	Color	Audio	
A-1	2500-2506	2501.25	2504.83	2505.75	2686.0625
B-1	2506-2512	2507.25	2510.83	2511.75	2686.1875
A-2	2512-2518	2513.25	2516.83	2517.75	2687.0625
B-2	2518-2524	2519.25	2522.83	2523.75	2687.1875
A-3	2524-2530	2525.25	2528.83	2529.75	2688.0625
B-3	2530-2536	2531.25	2534.83	2535.75	2688.1875
A-4	2536-2542	2537.25	2540.83	2541.75	2689.0625
B-4	2542-2548	2543.25	2547.83	2547.75	2689.1875
C-1	2548-2554	2549.25	2552.83	2553.75	2686.3125
D-1	2554-2560	2555.25	2558.83	2559.75	2686.4375
C-2	2560-2566	2561.25	2564.83	2565.75	2687.3125
D-2	2566-2572	2567.25	2570.83	2571.75	2687.4375
C-3	2572-2578	2573.25	2576.83	2577.75	2688.3125
D-3	2578-2584	2579.25	2582.83	2583.75	2688.4375
C-4	2584-2590	2585.25	2588.83	2589.75	2689.3125
D-4	2590-2596	2591.25	2594.83	2595.75	2689.4375
E-1	2596-2602	2597.25	2600.83	2601.75	2686.5625
F-1	2602-2608	2603.25	2606.83	2607.75	2686.6875
E-2	2608-2614	2609.25	2612.83	2613.75	2687.5625
F-2	2614-2620	2615.25	2618.83	2619.75	2687.6875
E-3	2620-2626	2621.25	2624.83	2625.75	
F-3	2626-2632	2627.25	2630.83	2631.75	
E-4	2632-2638	2633.25	2636.83	2637.75	
F-4	2638-2644	2639.25	2642.83	2643.75	
G-1	2644-2650	2645.25	2648.83	2649.75	2686.8125
H-1	2650-2656	2651.25	2654.83	2655.75	
G-2	2656-2662	2657.25	2660.83	2661.75	2687.8125
H-2	2662-2668	2663.25	2666.83	2667.75	
G-3	2668-2674	2669.25	2672.83	2673.75	2688.8125
H-3	2674-2680	2675.25	2678.83	2679.75	
G-4	2680-2686	2681.25	2684.83	2685.75	2689.8125

## CATV FREQUENCY ASSIGNMENTS

Channel No.	Bandwidth (MHz)	Carrier in MHz			
		Video	Color	Audio	
<b>SUB-VHF</b>					
T-7	5.75-11.75	7.00	10.58	11.50	
T-8	11.75-17.75	13.00	16.58	17.50	
T-9	17.75-23.75	19.00	22.58	23.50	
T-10	23.75-29.75	25.00	28.58	29.50	
T-11	29.75-35.75	31.00	34.58	35.50	
T-12	35.75-41.75	37.00	40.58	41.50	
T-13	41.75-47.75	43.00	46.58	47.50	
TV-I.F.					
40-46		45.75	42.17	41.25	
<b>LO-BAND</b>					
2	2	54-60	55.25	58.83	59.75
3	3	60-66	61.25	64.83	65.75
4	4	66-72	67.25	70.83	71.75
5	5	76-82	77.25	80.83	81.75
6	6	82-88	83.25	86.83	87.75
FM BAND	88-108	-	-	-	-
<b>MID-BAND</b>					
98	(A-2) 108-114	109.25	112.83	113.75	
99	(A-1) 114-120	115.25	118.83	119.75	
14	(A) 120-126	121.25	124.83	125.75	
15	(B) 126-132	127.25	130.83	131.75	
16	(C) 132-138	133.25	136.83	137.75	
17	(D) 138-144	139.25	142.83	143.75	
18	(E) 144-150	145.25	148.83	149.75	
19	(F) 150-156	151.25	154.83	155.75	
20	(G) 156-162	157.25	160.83	161.75	
21	(H) 162-168	163.25	166.83	167.75	
22	(I) 168-174	169.25	172.83	173.75	
<b>HI-BAND</b>					
7	174-180	175.25	178.83	179.75	
8	180-186	181.25	184.83	185.75	
9	186-192	187.25	190.83	191.75	
10	192-198	193.25	196.83	197.75	
11	198-210	205.25	208.83	203.75	
12	204-210	205.25	208.83	209.75	
13	210-216	211.25	214.83	215.75	

潤泰實業有限公司  
 台中市太原北路 160 號  
 Tel: 04-2955093  
 Fax: 04-2963189

## CATV FREQUENCY ASSIGNMENTS

Channel No.		Bandwidth (MHz)	CARRIER IN MHz		
			Video	Color	Audio
<b>SUPERBAND</b>					
23	(J)	216-222	217.25	220.83	221.75
24	(K)	222-228	223.25	226.83	227.75
25	(L)	228-234	229.25	232.83	233.75
26	(M)	234-240	235.25	238.83	239.75
27	(N)	240-246	241.25	244.83	245.75
28	(O)	246-252	247.25	250.83	251.75
29	(P)	252-258	253.25	256.83	257.75
30	(Q)	258-264	259.25	262.83	263.75
31	(R)	264-270	265.25	268.83	269.75
32	(S)	270-276	271.25	274.83	275.75
33	(T)	276-282	277.25	280.83	281.75
34	(U)	282-288	283.25	286.83	287.75
35	(V)	288-294	289.25	292.83	293.75
36	(W)	294-300	295.25	298.83	299.75
<b>HYPER-BAND</b>					
37	(AA)	300-306	301.25	304.83	305.75
38	(BB)	306-312	307.25	310.83	311.75
39	(CC)	312-318	313.25	316.83	317.75
40	(DD)	318-324	319.25	322.83	323.75
41	(EE)	324-330	331.25	334.83	335.75
42	(FF)	330-336	331.25	334.83	335.75
43	(GG)	336-342	337.25	340.83	341.75
44	(HH)	342-348	343.25	346.83	347.75
45	(II)	348-354	349.25	352.83	353.75
46	(JJ)	354-360	355.25	358.83	359.75
47	(KK)	360-366	361.25	364.83	365.75
48	(LL)	366-372	367.25	370.83	371.75
49	(MM)	372-378	373.25	376.83	377.75
50	(NN)	378-384	379.25	382.83	383.75
51	(OO)	384-390	385.25	388.83	389.75
52	(PP)	390-396	391.25	394.83	395.75
53	(QQ)	396-402	397.25	400.83	401.75
54	(RR)	402-408	403.25	406.83	407.75
55	(SS)	408-414	409.25	412.83	413.75
56	(TT)	414-420	415.25	418.83	419.75
57	(UU)	420-426	421.25	424.83	425.75
58	(VV)	426-432	426.25	429.83	431.75
59	(WW)	432-438	432.25	435.83	437.75

## UHF FREQUENCY ASSIGNMENTS

Channel No.		Bandwidth (MHz)	CARRIER IN MHz		
			Video	Color	Audio
<b>UHF-BAND</b>					
14		470-476	471.25	474.83	475.75
15		476-482	477.25	480.83	481.75
16		482-488	483.25	486.83	487.75
17		488-494	489.25	492.83	493.75
18		494-500	495.25	498.83	499.75
19		500-506	501.25	504.83	505.75
20		506-512	507.25	510.83	511.75
21		512-518	513.25	516.83	517.75
22		518-524	519.25	522.83	523.75
23		524-530	525.25	528.83	529.75
24		530-536	531.25	534.83	535.75
25		536-542	537.25	540.83	541.75
26		542-548	543.25	546.83	547.75
27		548-554	549.25	552.83	553.75
28		554-560	555.25	558.83	559.75
29		560-566	561.25	564.83	565.75
30		566-572	567.25	570.83	571.75
31		572-578	573.25	576.83	577.75
32		578-584	579.25	582.83	583.75
33		584-590	585.25	588.83	589.75
34		590-596	591.25	594.83	595.75
35		596-602	597.25	600.83	601.75
36		602-608	603.25	606.83	607.75
37		608-614	609.25	612.83	613.75
38		614-620	615.25	618.83	619.75
39		620-626	621.25	624.83	625.75
40		626-632	627.25	630.83	631.75
41		632-638	633.25	636.83	637.75
42		638-644	639.25	642.83	643.75
43		644-650	645.25	648.83	649.75
44		650-656	651.25	654.83	655.75
45		656-662	657.25	660.83	661.75
46		662-668	663.25	666.83	667.75
47		668-674	669.25	672.83	673.75
48		674-680	675.25	678.83	679.75
49		680-686	681.25	684.83	685.75
50		686-692	687.25	690.83	691.75
51		692-698	693.25	696.83	697.75
52		698-704	699.25	702.83	703.75
53		704-710	705.25	708.83	709.75
54		710-716	711.25	714.83	715.75
55		716-722	717.25	720.83	721.75
56		722-728	723.25	726.83	727.75
57		728-734	729.25	732.83	733.75
58		734-740	735.25	738.83	739.75
59		740-746	741.25	744.83	745.75
60		746-752	747.25	750.83	751.75
61		752-758	753.25	756.83	757.75
62		758-764	759.25	762.83	763.75
63		764-770	765.25	768.83	769.75
64		770-776	771.25	780.83	781.75
65		776-782	777.25	780.83	787.75
66		782-788	783.25	786.83	787.75
67		788-794	789.25	792.83	793.75
68		794-800	795.25	798.83	799.75
69		800-806	801.25	804.83	805.75

潤泰實業有限公司  
 台中市太原北路 160 號  
 Tel: 04-2955093  
 Fax: 04-2963189