

CP-104UL V2

4-port RS-232 Universal PCI Smart Serial Board

Features

- Over 800 Kbps data throughput, for top performance
- Serial communication speed up to 921.6 Kbps
- 128-byte FIFO and on-chip H/W, S/W flow control
- Universal PCI compatible with 3.3/5V PCI and PCI-X
- MD1 Low profile board for compact-sized PCs
- Windows 2003/XP/2000/98/ME, Linux, UNIX driver support
- Easy maintenance with on-board LED display and management software
- Single 5 VDC power requirement
- On-board 15 KV ESD protection



Overview

CP-104UL V2 is a Smart Universal PCI Multiport Serial Board designed for POS and ATM applications, and for use by industrial automation system manufacturers and system integrators. CP-104UL V2 is compatible with all popular operating systems, and each of its 4 RS-232 serial ports

supports data rates of up to 921.6 Kbps, and provides full modem control signals, ensuring compatibility with a wide range of serial peripherals. In addition, CP-104UL V2 works with both 3.3V and 5V PCI buses, allowing the board to be installed in virtually any available PC server.

Designed for Standard and Compact-sized Computers

CP-104UL V2 is an MD1 low profile board, compatible with 3.3V and 5V PCI bus, that only requires a 5 VDC power supply.

This means that CP-104UL V2 fits any sized host computer, ranging from shoebox to standard industrial sized PCs.

Top Performance with 128-byte FIFO and on-chip H/W, S/W Flow Control

Our 17 plus years of experience in serial board design is now concentrated in Moxa's new top performance serial data transmission chip, called Turbo Serial Engine™, which equips the CP-104UL V2 series board with a 128-byte FIFO, on-chip

hardware and software flow control, and burst data mode. This makes CP-104UL V2 the top performing smart multiport serial board in the world.

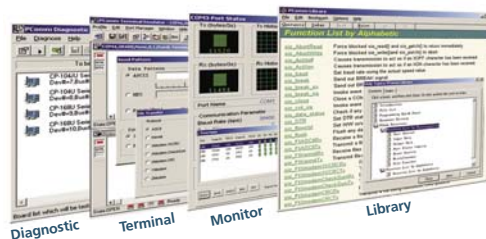
Support for Major Windows and Linux/Unix OS drivers

Moxa continues to add support for today's mainstream operating systems, and CP-104UL V2, which supports reliable Windows COM and Linux/UNIX TTY drivers, is no exception. In addition,

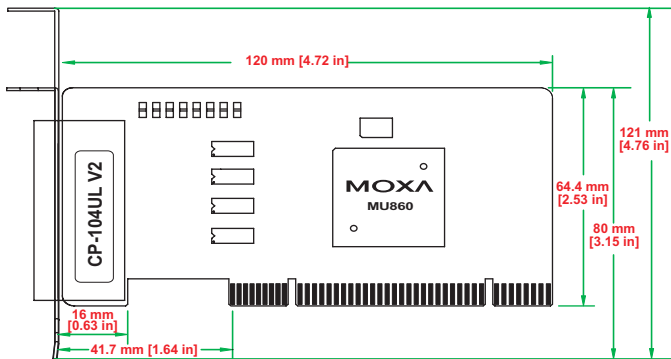
other operating systems, such as embedded Windows XP and QNX, are supported for embedded integration applications.

PComm Lite Utility for Easy Management and Software Development

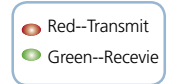
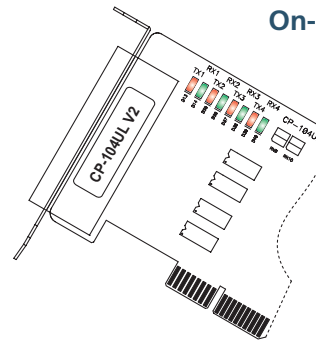
CP-104UL's software package includes Moxa's PComm Lite utility, which can be used to diagnose and monitor the status of installed Moxa serial boards. In addition, PComm Library, which includes libraries of basic serial I/O and file transfer functions, is included free of charge, giving users a complete and easy to use software development tool for Windows applications.



Dimensions

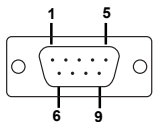


On-Board LED Display



Connection Options

Male DB9



PIN	DB9(M)	PIN	DB9(M)
1	DCD	5	GND
2	RxD	6	DSR
3	TxD	7	RTS
4	DTR	8	CTS

CBL-M44M9x4-50

(DB44 to male DB9 x 4)

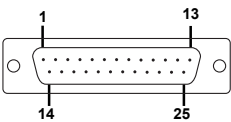


OPT4-M9B

(DB44 to male DB9 x 4)



Male DB25



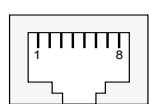
PIN	DB25(M)	PIN	DB25(M)
2	TXD	6	DSR
3	RxD	7	GND
4	RTS	8	DCD
5	CTS	20	DTR

CBL-M44M25x4-50

(DB44 to male DB25 x 4)



8-Pin RJ45



PIN	RJ45	PIN	RJ45
1	DSR	5	RxD
2	RTS	6	DCD
3	GND	7	CTS
4	TxD	8	DTR

OPT4-RJ45B

(DB44 to 8-Pin RJ45 x 4)



Specifications

Hardware

Connectors: Female DB44

Comm. Controller: MOXA UART (16C550C compatible)

Interface

Bus Interface: 32-bit Universal PCI

Number of Ports: 4

Max. No. of Boards: 4 (only one IRQ required)

Signals: TxD, RxD, RTS, CTS, DTR, DSR, DCD, GND

Performance

Baud Rate: 50 bps to 921.6 Kbps

Configuration

Data Bits: 5, 6, 7, 8

Stop Bits: 1, 1.5, 2

I/O address/IRQ: BIOS assigned

Parity: None, Even, Odd, Space, Mark

Ordering Information

CP-104UL-DBxx V2

4-port RS-232 Universal PCI Smart MSB

All items include:

- MSB with standard bracket
- DB44 to quad DB9 or DB25 connection cable
- Low profile bracket
- Documentation & Software CD-ROM

Flow Control: RTS/CTS, XON/XOFF

Operating Systems:

Windows NT/2000/XP/2003, Windows95/98/ME, Linux 2.4/2.6 (Red Hat/SuSe...), FreeBSD, SCO OpenServer, SCO Unixware 7, SCO Unixware 2.1, Windows XP Embedded, QNX, DOS

Power and Environment

Power Requirement: 120 mA (+5V)

Operating Temperature: 0 to 55°C

Operating Humidity: 5 to 95% RH

Storage Temperature: -20 to 85°C

Dimensions (W x D): 64.5 x 120 mm (2.54 x 4.72 in)

(LP Bracket: 80 mm) (Std. Bracket: 121 mm)

Surge Protection: Embedded 15 KV ESD Surge Protection

Regulatory Approvals: CE Class B, FCC Class B

Warranty: 5 years

Optional Connectors

Opt4-M9B: 4-port male DB9 connection box

Opt4-RJ45B: 4-port 8-pin RJ45 connection box

CBL-M44M9x4-50: 4-port male DB9 connection cable

CBL-M44M25x4-50: 4-port male DB25 connection cable