

SPECIFICATION MODEL CX-140D

IMPEDANCE / 50 Ohms.

VOLTAGE

ACTUATION DATA :

VOLTAGE :

Pull in 10Vdc - 14Vdc (12Vdc Nominal)

Drop out 3.0Vdc Min.

Current 69mA @12Vdc 20°C

Coil resistance ... 196 Ohms ±10% 20°C

SWITCHING TIME

SWITCHING TIME :

Pull in 15ms max.

Drop out 10ms max.

LIFE EXPECTANCY ... 1,000,000. Operation min.

MECHANICAL

MECHANICAL :

Contact arrangement SPDT

RF contacts Break before make.

Operational temperature - 25°C to +50°C (Max Temperature Rise:20c)

Weight Approx 95gs.

Mounting Four screws

Cable connections N Female, Directly connect cables

ELECTRICAL CHARACTERISTICS

ELECTRICAL CHARACTERISTICS :

Frequency	VSWR	Isolation	Ins.Loss	IN PUT RF Power
MHz	Max	-dB(min)	-dB(max)	W
50	1.03	55	0.08	250
150	1.03	51	0.1	250
500	1.05	47	0.15	200
1000	1.06	34	0.2	150
1500	1.2	28	0.25	100

COIL CHARACTERISTICS

COIL CHARACTERISTICS :

Nominal Voltage
12Vdc

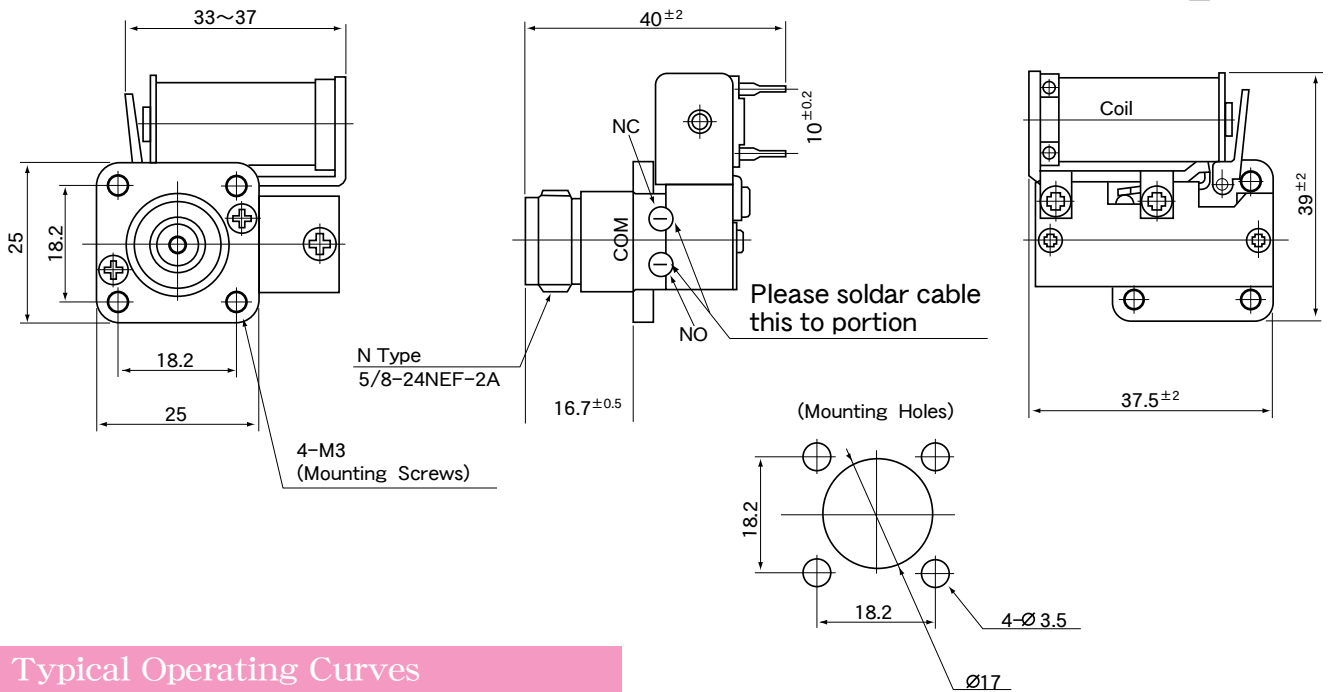
Voltage Range
10Vdc - 14Vdc

Resistance Ohms 10%
196 ±10% 20°C

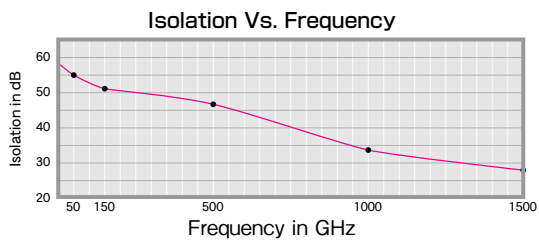
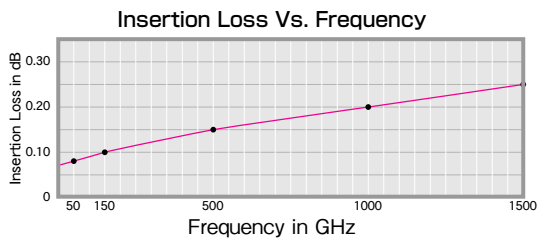
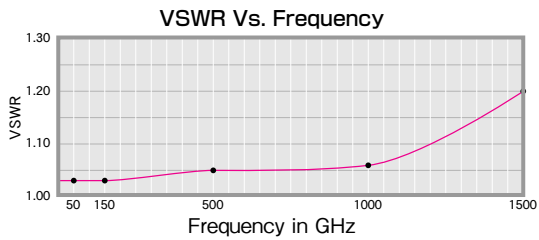
Note : Other voltages are also available at option.

DIMENSIONS

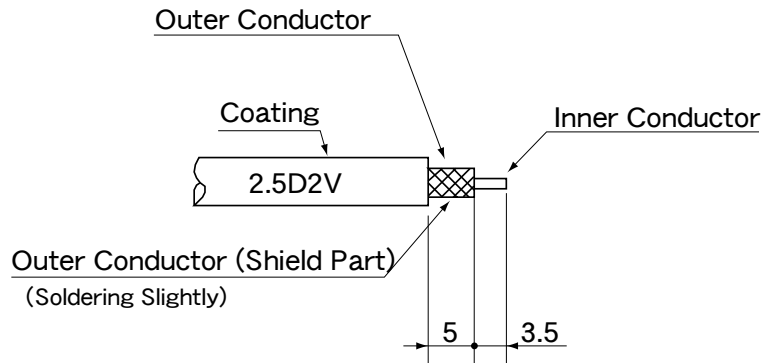
■ SCALE m/n



Typical Operating Curves



Cable Termination



Schematic

