

MT SDK

MT SOFTWARE DEVELOPMENT KIT

MT SOFTWARE DEVELOPMENT KIT

The MT Software Development Kit gives easy access to Xsens' products, allowing users to configure and easily integrate the MTx, MTi and MTi-G Motion Trackers in their own applications. The kit contains a specially developed and easy-to-use graphical user interface, as well as drivers for various operating systems and many other useful tools, example source code and documentation.

The MT Software Development Kit contains:

- MT Manager
- Development Tools:
 - MT API for Windows
 - C++ classes and direct low level (binary) communication for any OS
 - Example source codes
- Magnetic Field Mapper plug-in
- Documentation

MT MANAGER

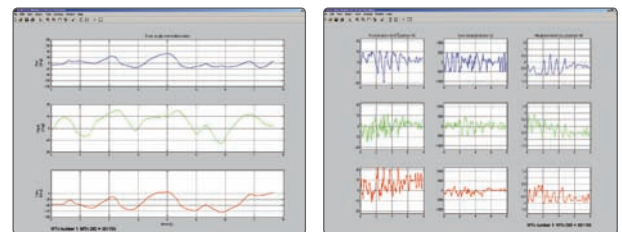
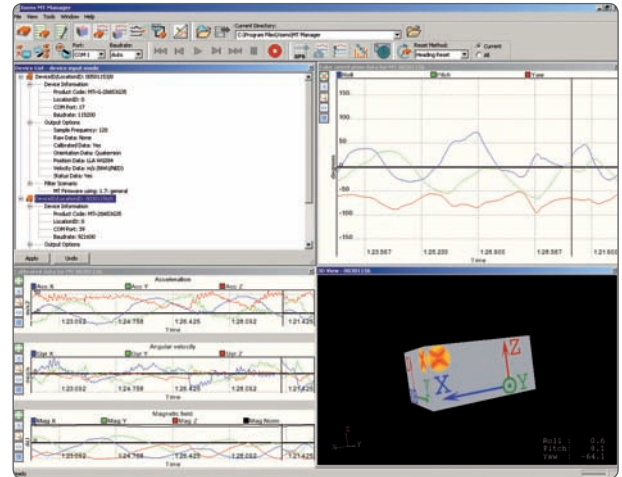
The MT Manager is Windows application for easy access to the full capabilities of Xsens' Motion Trackers. It is the tool for getting acquainted with, configuring and analyzing the Motion Trackers. The MT Manager is also capable of recording and playback MT data.

- Real time visualization of all MT data
- Logging, exporting and reprocessing data
- Changing and storing settings in the firmware

MT DEVELOPMENT TOOLS

The Xsens Communication MT (CMT) API will help save time in interfacing in a reliable way with Xsens Motion Trackers in a Windows environment. Direct interfacing gives full control and maximum flexibility. The example code (C/C++, Excel (VBA) and Matlab) can be easily extended to a user-specific program.

The C++ class and direct low level (binary) communication allows for reliable interfacing with Xsens Motion Trackers in any (RTOS) environment. The C++ class and direct low level (binary) communication is open source and can be used when hard real-time performance is required. The example code for Linux and Windows can be easily extended to a user-specific program.



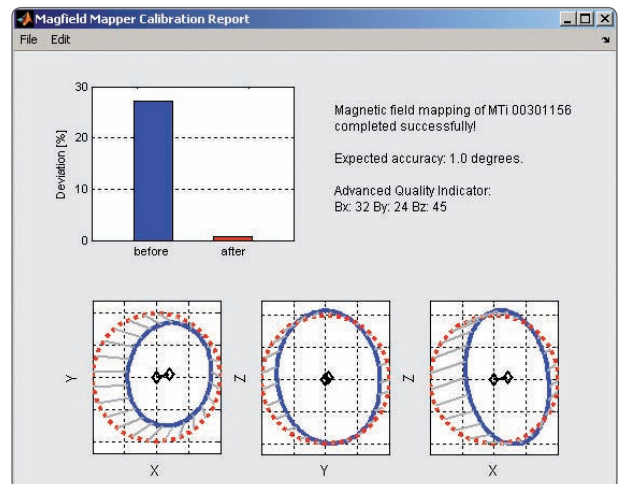
```
Editor - C:\Program Files\Xsens\Software Development\Examples\Matlab Example\displayRealTimeData.m
File Edit Text Go Cell Tools Debug Desktop Window Help
Stack: Base
46 % please refer to:
47 % http://www.mathworks.com/support/bugreports/details.html?rp=207276
48
49 % Check to see if number of input arguments is correct
50 if nargin>5,
51     error('too many input arguments')
52 end
53
54 % set default values if needed
55 defaultValues={1, 'caldata', 2, 2, 'demo'};
56 nonemptyIdx=~cellfun('isempty',varargin);
57 defaultValues(nonemptyIdx)=varargin(nonemptyIdx);
58 [COMport, DisplayMode, zoom_level_setting, update_rate, serial]...
59     =deal(defaultValues{:});
60
61 % set up CMT
62 switch computer
63     case 'PCWIN'
64         h = actxserver('MotionTracker.CMT');
65     case 'PCWIN64'
66         h = actxserver('MotionTracker.CMT64');
67     otherwise
68         error('CMT:os','Unsupported OS');
69 end
```



xsens

MAGNETIC FIELD MAPPER PLUG-IN (MFM)

The Magnetic Field Mapper plug-in is an easy-to-use routine to calibrate for (ferro)magnetic disturbances. The procedure is accurate, quick and has to be executed only once. This enables the utilization of Xsens Motion Trackers also when mounted on vehicles and other metal objects, with the same performance as if used in a homogeneous magnetic field.



A full description on the MT Software Development Kit can be found on www.xsens.com

ABOUT XSSENS TECHNOLOGIES

Xsens is a leading supplier of 3D motion tracking products based upon miniature MEMS inertial sensor technology. Since its inception in 2000, several thousands of motion sensors and motion capture solutions have successfully been deployed in areas such as 3D character animation, rehabilitation and sports science, and robot and camera stabilization. Customers include Electronic Arts, Sony Pictures Imageworks, INAIL Prosthesis Centre, Daimler, Saab Underwater Systems, Kongsberg Defence & Aerospace and many other companies and institutes throughout the world.

Xsens' research department has created unique intellectual property in the field of multi-sensor data fusion algorithms, combining inertial sensors with aiding technologies such as GPS and RF positioning and biomechanical modeling. The company and its products have received several awards, amongst which four consecutive entries in Deloitte's ranking of fastest growing technology companies in Europe.

Xsens is headquartered in Enschede, The Netherlands and has a subsidiary in Los Angeles, California, US.



xsens

Xsens Technologies B.V.

phone +31 88 97367 00

fax +31 88 97367 01

e-mail info@xsens.com

internet www.xsens.com