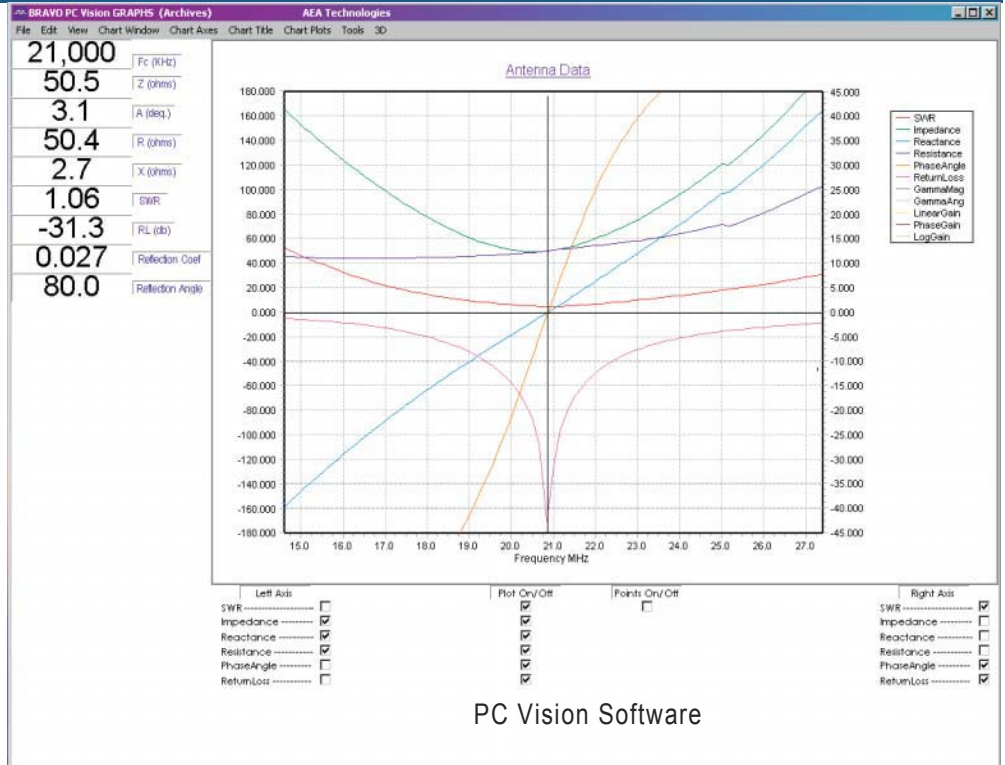


Bravo MRI II
S11 & S21
Analyzer

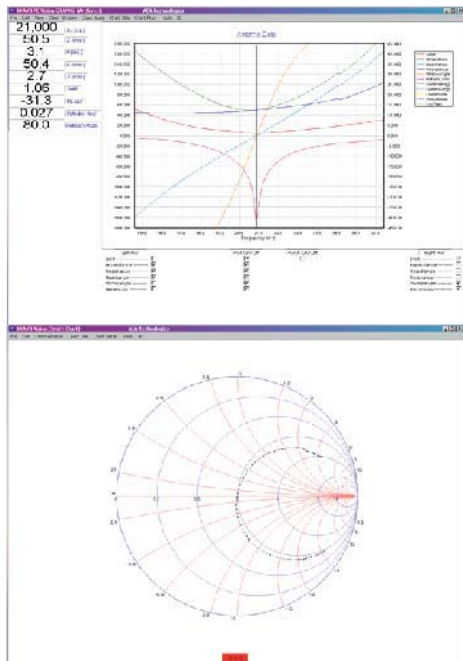


The Bravo MRI analyzers are handheld test instruments used by R&D engineers, field service engineers, installation specialists, production, and quality assurance teams to calibrate/tune MRI transmit and receive coils. They provide accurate measurements of impedance, resistance, phase angle, X, Q, return loss, and SWR. The Bravo MRI is a true Vector Impedance analyzer that accurately measures circuit impedances from 2 to 2000 Ohms. The Bravo MRI is capable of simultaneously plotting any two measurements while displaying both plot's respective Y axis scales. Circuit Q is calculated using either serial or parallel resonances. The Bravo MRI's portability and ability to be used in close proximity of the magnetic field make it the ideal test instrument for installing and servicing MRI systems. There is a Cable Nulling capability to eliminate the effects of connecting cables.

AEA Technology offers several configurations of the Bravo MRI product to satisfy your specific requirements. The Bravo MRI covers up to 70 MHz while the MRI EX unit extends the frequency range to 200 MHz. The MRI II adds S21 parameters and is the perfect tool for measuring isolation between coils.

The Bravo PC Vision Software application provides the user with the capability of remotely operating the Bravo MRI through a serial port connection while viewing Real-Time results on a P.C. The software makes the capture, storage, and printing of documentation and reports easy.

The Bravo MRI will save time, reduce capital expenditures, and improve on other costs that are typically associated with the development, production, installation, and servicing of MRI systems.



PC Vision Screen shots



Optional Hard Case 6015-1003



Optional Soft Kit Case 6015-1002

FEATURES

- Large numeric display of center frequency graph values and Q of the left graph
- Simultaneously view two separate plots with differing scales
- Measure Parallel or Series Resistance & Reactance
- Automatic Calibration and Self-test
- Cable/Fixture Nulling for both S11 and S21 modes
- Nonvolatile memories for both Plot Storage and Setup data
- Signal Generator Mode - CW signal generator
- Windows™ 95/98/ME/XP/2000 compatible **PC Vision** software included
 - Near real-time display of plots on PC (~ 1 update per second)
 - Smith Chart display
 - Easy transfer of stored memory data to software.
- EL Backlit Supertwist LCD Display for better contrast & viewing angles
- Auditory cues for non-visual tuning
- Lightweight and portable

BENEFITS

- Saves time
- Improves Reliability
- Improves Quality
- Reduces service wait time
- Reduces Capitol expenditures

SPECIFICATIONS

- Frequency range 100 KHz to 70MHz & 100KHz to 200 MHz
- Tuning/Display resolution < 0.02% of center Frequency
- Measurement speed ~2 sweeps / second
- Frequency display width 0 to 12.8 MHz/80 data points/Large readouts.
0 to 16 MHz/100 data points/small readouts.
- Impedance Range 2 to 2000 Ohms
- Impedance plotting scales 0 to 100 Ohms Minimum
0 to 2000 Ohms Maximum
- Phase angle plotting scales +/- 15 to +/- 180 Degrees
- Harmonic and spurious >30 dB below fundamental
- Output power ~ -15 dBm@ 50 ohms
- Serial interface speeds 4800 to 57.6K bps
- Power requirements 10-18 VDC @ 400 mA. minimum
- Input connector BNC for Bravo MRI
& an "N" Connector for all others
- Size 8.5" x 4.3" x 2.25"
- Weight 20 oz.