

Wireless Antennas

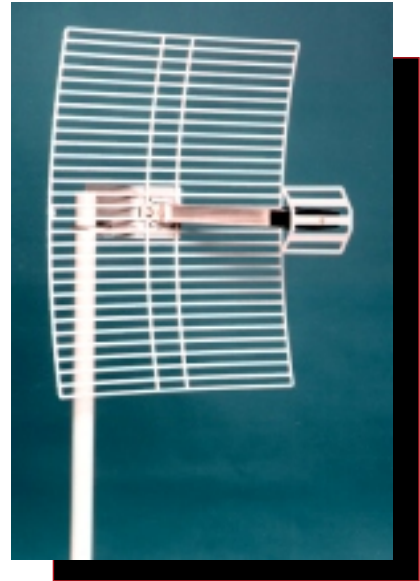


For World-Wide Applications
WLAN/ISM
2.4 - 2.5 GHz*

**MODEL
26T-2400***



**MODEL
18T-2400***



*U.S. Patent 5,191,350

FEATURES

- Die-cast 18/26 manufacturing processes
- Magnesium Alloy is superior to anodized aluminum and weighs 33% less
- Low wind loading
- Manufactured with nonferrous materials; magnesium alloy, stainless steel and aluminum
- Compact packaging
- No mechanical adaptors required to mount the feed
- Five Year Limited Warranty

BENEFITS

- Consistent high performance from every antenna
- Lightest weight and most durable grid antennas
- Operational in most all weather environments
- No rust!
- Saves on shipping costs
- One feed fits both antennas
- Guaranteed reliability

*Contact factory for other frequency options.

PERFORMANCE SPECIFICATIONS*

	MODEL 18T-2400	MODEL 26T-2400
Input Frequency	2400 - 2500 MHz	2400 - 2500 MHz
Gain	18 dBi	24 dBi
-3 dB Beam Width	14°	7.5°
Front to Back Ratio	>23 dB	>31 dB
Polarity	Dual	Dual
Cross Polarity Rejection	>23 dB	>26 dB
VSWR (Maximum)	1.4:1 @ 2400-2500 MHz	1.4:1 @ 2400-2500 MHz
Impedance @ Output	50 OHMS	50 OHMS
Connector NType**	Male	Male
Coaxial Pigtail - RG8**	24 inches	24 inches
Input Power	50 Watts	50 Watts
Windloading		
@ 100 MPH	39.4 lbs.	97.0 lbs.
@ 140 MPH	77.9 lbs.	199.5 lbs.
Elevation Adjustment	60° in 10° Increments	60° in 10° Increments
Size	16 x 20 x 15 inches (40.64 x 50.80 x 38.10 cm)	23.5 x 39.25 x 15 inches (60.95 x 91.44 x 38.10 cm)
Weight	2.7 lbs. (1.22 Kg)	5.4 lbs. (2.43 Kg)
Reflector Material	Cast Magnesium Alloy	Cast Magnesium Alloy
Mounting Hardware	Stainless Steel	Stainless Steel
Mounting	1 - 2 O.D. Mast (2.54 - 5.08 cm)	1 - 2 O.D. Mast (2.54 - 5.08 cm)

*Specifications subject to change without notice.

**Contact factory for other options.