



*MapSource*TM

user's
manual
and
reference
guide



Notes

Introduction

SOFTWARE LICENSE AGREEMENT

THIS SOFTWARE IS OWNED BY GARMIN CORPORATION (“GARMIN”) AND IS PROTECTED UNDER COPYRIGHT LAWS AND INTERNATIONAL COPYRIGHT TREATIES. THIS SOFTWARE IS LICENSED, NOT SOLD. THIS SOFTWARE IS PROVIDED UNDER THE FOLLOWING LICENSE WHICH DEFINES WHAT YOU MAY DO WITH THE PRODUCT AND CONTAINS LIMITATIONS ON WARRANTIES AND/OR REMEDIES.

IMPORTANT: CAREFULLY READ THIS LICENSE BEFORE USING THIS PRODUCT. INSTALLING, COPYING, OR OTHERWISE USING THIS PRODUCT INDICATES YOUR ACKNOWLEDGMENT THAT YOU HAVE READ THIS LICENSE AND AGREE TO ITS TERMS. IF YOU DO NOT AGREE, RETURN THE COMPLETE PRODUCT TO GARMIN INTERNATIONAL, INC. CUSTOMER SERVICE, 1200 EAST 151st STREET, OLATHE, KS 66062 WITHIN 10 DAYS OF THE DATE YOU ACQUIRED IT FOR A FULL REFUND.

1. LICENSE: GARMIN (“we” or “us”) provides you with storage media containing computer software (the “Program”) which may also include digital cartographic data and “online” or electronic documentation, and printed materials (together called the “Product”) and grants you a limited non-exclusive license to use the Product in accordance with the terms of this License Agreement. The copyright and all other rights to the Product shall remain with us. You must reproduce any copyright or other notice marked on the Product on all copies you make.

2. YOU MAY: a) install and use one copy of the Product on a single computer or network. This copy is to be used by only a single user at a time. If you wish to use the Product for more users, you will need an additional license for each user.

b) make one copy of the Product for archive or backup purposes.

c) use a copy of the Product on a home or portable computer if that copy is never loaded at the same time it is loaded on your primary computer.

d) transfer the Product to someone else only if you assign all of your rights under this License, cease all use of the Product, erase or destroy any copy (including the hard disk copy) made in support of your use of the Product, and ensure that the other person agrees to the terms of this License.

3. YOU MUST NOT: a) make copies of the Product except as expressly permitted in Section 2 of this License.

b) translate, reverse engineer, decompile, or disassemble the Product except to the extent the foregoing restriction is expressly prohibited by applicable law.

c) rent, lease, loan, sub-license, distribute, assign, or transfer the Product except as set out in Section 2 (d) above.

d) modify the Product or merge all or any part of the Product with another program.

4. TERM: This License shall continue for as long as you use the Product. However, this License will terminate automatically without notice from GARMIN if you fail to comply with any of its terms or conditions. You must agree, upon termination, to destroy all copies of the Product. The Limitations of Warranties and Liability set out below shall continue in force even after any termination.

SOFTWARE LICENSE AGREEMENT

5. **LIMITATION OF WARRANTIES AND LIABILITY:** THE PRODUCT IS PROVIDED ON AN "AS IS" BASIS, WITHOUT ANY WARRANTIES OR CONDITIONS, EXPRESS OR IMPLIED, INCLUDING, BUT NOT LIMITED TO, WARRANTIES OF MERCHANTABILITY, MERCHANTABILITY OR FITNESS FOR A PARTICULAR PURPOSE, OR THOSE ARISING BY LAW, STATUTE, USAGE OF TRADE, OR COURSE OF DEALING. THE ENTIRE RISK AS TO THE RESULTS AND PERFORMANCE OF THE PRODUCT IS ASSUMED BY YOU. NEITHER WE NOR OUR DEALERS OR SUPPLIERS SHALL HAVE ANY LIABILITY TO YOU OR ANY OTHER PERSON OR ENTITY FOR ANY INDIRECT, INCIDENTAL, SPECIAL, OR CONSEQUENTIAL DAMAGES WHATSOEVER, INCLUDING, BUT NOT LIMITED TO, LOSS OF REVENUE OR PROFIT, LOST OR DAMAGED DATA OR OTHER COMMERCIAL OR ECONOMIC LOSS, EVEN IF WE HAVE BEEN ADVISED OF THE POSSIBILITY OF SUCH DAMAGES, OR THEY ARE FORESEEABLE. WE ARE ALSO NOT RESPONSIBLE FOR CLAIMS BY A THIRD PARTY. OUR MAXIMUM AGGREGATE LIABILITY TO YOU SHALL NOT EXCEED THE AMOUNT PAID BY YOU FOR THE PRODUCT. THE LIMITATIONS IN THIS SECTION SHALL APPLY WHETHER OR NOT THE ALLEGED BREACH OR DEFAULT IS A BREACH OF A FUNDAMENTAL CONDITION OR TERM OR A FUNDAMENTAL BREACH. SOME STATES/COUNTRIES DO NOT ALLOW THE EXCLUSION OR LIMITATION OF LIABILITY FOR CONSEQUENTIAL OR INCIDENTAL DAMAGES, SO THE ABOVE LIMITATION MAY NOT APPLY TO YOU.

6. **RESTRICTED RIGHTS:** If this Product is acquired by or for the U.S. Government, then it is provided with Restricted Rights. Use, duplication, or disclosure by the U.S. Government is subject to restrictions as set forth in subparagraph (c)(1)(ii) of The Rights in Technical Data and Computer Software clause at DFARS 252.227-7013, or subparagraphs (c)(1) and (2) of the Commercial Computer Software - Restricted Rights at 48 CFR 52.227-19, or clause 18-52.227-86(d) of the NASA Supplement to the FAR, as applicable. The contractor/manufacturer is GARMIN International, Inc., 1200 E. 151st Street, Olathe, KS 66062, USA.

7. **EXPORT CONTROLS:** You agree not to export or re-export the Product to any country in violation of the export control laws of the United States of America.

8. **GENERAL:** This License is the entire agreement between us, superseding any other agreement or discussions, oral or written, and may not be changed except by a signed agreement. This License shall be governed by and construed in accordance with the laws of the State of Kansas, United States of America. If any provision of this License is declared by a court of competent jurisdiction to be invalid, illegal, or unenforceable, such a provision shall be severed from the License and the other provisions shall remain in full force and effect.

Introduction

CAUTION

One of the goals of GARMIN is to provide customers with the most complete and accurate cartography that is available to us at a reasonable cost. We use a combination of governmental and private data sources, which we identify as required in product literature and copyright messages displayed to the consumer.

Virtually all data sources contain inaccurate or incomplete data to some degree. This is particularly true for areas outside the United States, where complete and accurate digital data is either not available, or is prohibitively expensive.

If the data source is lacking a feature, or an item is mislocated or misidentified, it will be incorrectly identified or missing in the GARMIN cartography product as well. Each product has strengths and weaknesses, and not all are suitable for every purpose. Please keep this in mind as you use and enjoy the benefits the cartography provides.

GARMIN encourages customers to report any errors found in our electronic maps by completing our on-line Error Reporting Form in the Cartography section of our website at www.garmin.com.



CAUTION



IT IS THE USER'S RESPONSIBILITY TO USE THIS PRODUCT PRUDENTLY. THIS PRODUCT IS INTENDED TO BE USED ONLY AS A TRAVEL AID AND MUST NOT BE USED FOR ANY PURPOSE REQUIRING PRECISE MEASUREMENT OF DIRECTION, DISTANCE, LOCATION OR TOPOGRAPHY.

Customer Service

Thank you for choosing GARMIN MapSource! — MapSource is the complete tool for managing your GARMIN GPS. MapSource provides geographic data on a CD-ROM, which augments the information already on your GARMIN GPS basemap. With MapSource version 3.00, you can view existing waypoints, routes and tracks on the graphic map or quickly create new waypoints or routes with a click of the mouse. Editing and managing your waypoints and routes is made easy with MapSource. This manual is organized into five sections for your convenience:

Introduction—gives a quick overview of MapSource and contains the Table of Contents and important information pertaining to the use of MapSource data.

Getting Started—takes you through installing MapSource and describes the MapSource Interface.

Quick Tour—walks you through the basic functions of MapSource.

Reference—provides details about the functions of MapSource.

Appendices—contains the map legend for MapSource Keyboard Shortcuts and the Index.

If you should encounter any difficulty while installing MapSource or if you have any questions about MapSource contact GARMIN's Customer Service Department at:

(913) 397-8200

Monday – Friday, 8 am –5 pm Central Time

or by email at sales@garmin.com

We hope that you enjoy MapSource and thank you again for choosing GARMIN!

Table of Contents

Section 1: Introduction	i-viii
Caution	iv
Software License Agreement	ii-iii
Customer Service	v
Section 2: Getting Started	1-6
Compatibility	
Waypoint/Route/Track Management	1
Map Transfer	1
Installation and Removal of Program	
Minimum System Requirements	1
To install the MapSource software:	1
To remove MapSource from your system:	2
Connecting the GPS to a computer	2
Finding your way around MapSource	
The MapSource Toolbars	2
File Toolbar	3
Edit Toolbar	3
View Toolbar	4
Tools Toolbar	4
Tab Lists	5
The Graphic Map	5
Status Bar	6
Section 3: Quick Tour	7-14
Waypoints	
Viewing Waypoint Information	8
Editing Waypoint Properties	8
Things You Should Know About Waypoint Properties	8
Create a Waypoint Using the Waypoint Tool	9
Moving a Waypoint Using the Selection Tool	9
Routes	
Create a Route Using the Route Tool	9
Extending a Route	10
Deleting a Route	10
Map Sets	
Creating a Map Set	11
Deleting Maps	11

Table of Contents

Tracks	
Viewing a Track Log	12
Transferring Data	
Saving Data to the GPS	12
Select/Deselect a Data Type for Transfer	12
Transferring Data into MapSource From the GPS	13
Section 4: Reference	14-34
File Menu	14-15
Edit Menu	16-17
View Menu	18-19
Tools Menu	20
Pan Around the Graphic Map	21
Select an item on the Graphic Map	21
Add a map to the Map Set	22
Remove a map from the Map Set	22
Determine a distance and bearing	22
Help Menu	23
Creating Waypoints	
Creating Waypoints Using the Waypoint tool	23
Selecting the Waypoint Tool	23
Create a Waypoint on the Graphic Map	24
Create a Waypoint with the Waypoint Properties	24
Things to Remember	24
Editing Waypoints	
Moving a Waypoint on the Graphic Map	26
Deleting Waypoints	26
Delete a Waypoint on the Map or Waypoint Tab	26
Creating Routes	
Creating a Route with the Route Tool	27
Selecting the Route Tool	27
Creating a Route with the Route Properties	27
Adding Waypoints to the Route	27
Naming a Route	28
Inverting a Route	28

Table of Contents

Editing Routes

Editing a Route Using the Selection Tool	28
Adding waypoints to an existing route	28
Extending a Route	28
Removing a Waypoint From a Route	29
Editing a Route Using the Route Properties	29

Creating and Using Map Sets

What is a Map Set	30
Selecting a Regional Map Using the Map Tool	30
Deselecting Regional Maps Using the Map Tool	31
Deselecting Regional Maps in the Maps Tab List	31
Naming a Map Set	31
To rename a Map Set:	31

Transferring Data

To Transfer MapSource Data to your GPS:	32
To transfer information from the GPS to MapSource:	32
Saving a MapSource Document	33

Mapsource Documents

To save a MapSource Document:	33
Opening a Previously Saved Document	33
To open a previously saved MapSource document:	33
Importing a GARMIN PCX5 Data File	33
To Import GARMIN PCX5 Data:	33
Printing the Graphic Map	34

Section 5: Appendices 35-46

Appendix A—Map Legends	35-38
Appendix B—Keyboard Shortcuts	39
Appendix C—Index	40-46

Compatibility

Waypoint/Route/Track Management

MapSource is compatible with all GARMIN GPS systems except the GPS 100 family of products (including GPS 100AVD, GPS 100MRN, GPS 100MIL, and SRVY II) and Panel Mount Aviation products.

Map Transfer

Not all GARMIN GPS systems are compatible with this feature. Please consult your GPS Owner's Manual to determine if your unit is able to use this feature.

Installation and Removal of Program

Minimum System Requirements

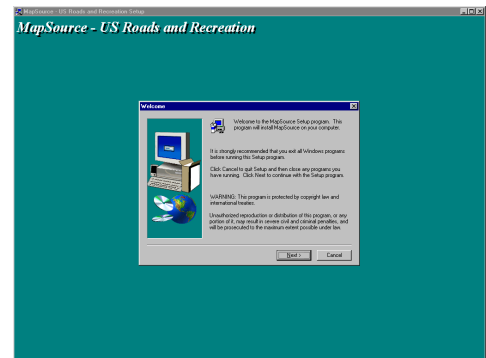
IBM-Compatible PC with Pentium processor, 16 Megabytes RAM, CD-ROM drive, Mouse or other pointing device, 256-color display adapter (24-bit color recommended) and monitor with 640 x 480 resolution or higher, and up to 20 Megabytes free hard drive space. MapSource requires a 32 bit operating system such as Windows 95, Windows 98, or Windows NT 4.0.

Installing the MapSource Software:

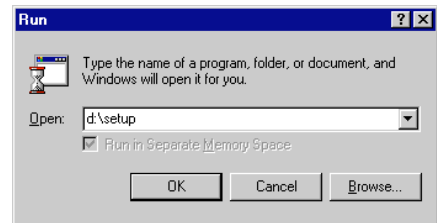
1. Insert the MapSource CD-ROM into your computer's CD-ROM drive.
2. Your computer should automatically run the start-up file and display a welcome screen. If for some reason it doesn't run automatically, click the **Start** button and select "**Run...**" then type in the drive letter of your CD-ROM drive followed by "setup" (for example, "d:\setup"), and press ENTER.
3. Follow the directions on your computer screen.
4. If you have purchased multiple MapSource products, repeat steps 1-3 for the additional CD-ROM(s).

Getting Started

Installing MapSource



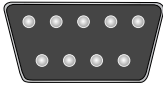
Install Welcome Screen



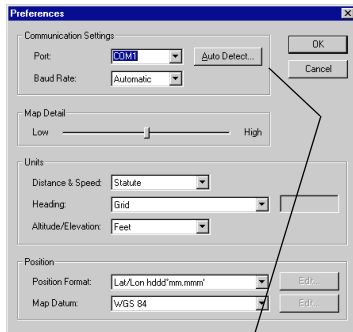
'Run' Dialog Box

Getting Started

Connecting the GPS to a computer



Serial Communications Port



Auto Detect

MapSource can automatically detect the communication port where the GPS is connected. After MapSource has detected the GPS, click 'OK' to set the COM port. The GPS has to be turned on for MapSource to detect it.

To Remove MapSource from Your System:

1. Click the **Start** button and select "**Settings**" then "**Control Panel**"
2. From the Control Panel page select "Add/Remove Programs", then highlight MapSource and click "Add/Remove".

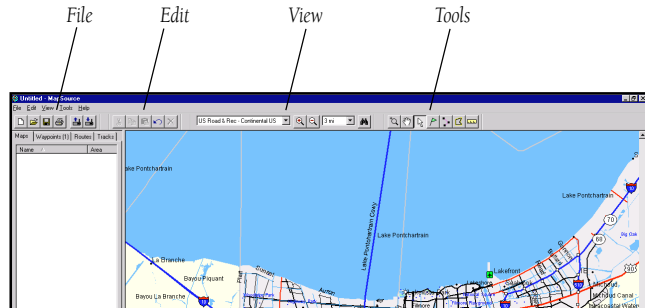
Connecting the GPS to a Computer

Using a PC Interface cable, connect your GPS to a serial communications port on your computer. To have MapSource automatically detect the GPS on the COM Port, select the 'Auto Detect' feature located in Preferences.

Finding Your Way Around MapSource

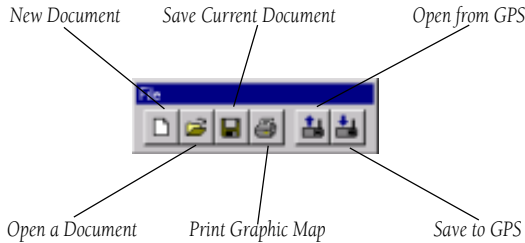
The MapSource Toolbars

MapSource has four toolbars 'File', 'Edit', 'View' and 'Tools' that allow you to quickly access many of the functions available in the menus.



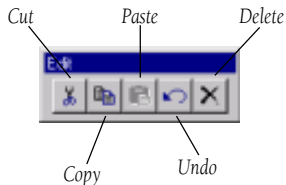
File Toolbar

The File Toolbar contains items found in the File Menu. You can create a new document, open an existing document, save a document, open a document from the GPS, save a document to the GPS, or print the Graphic Map. See File Menu on page 14 for more detailed information.

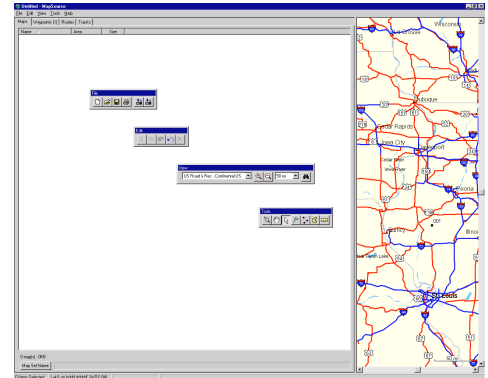


Edit Toolbar

The Edit Toolbar contains items found in the Edit Menu. You can Undo the last user action, select the Cut, Copy and Paste functions or Delete selected items. See View Menu on page 18 for more detailed information.



Finding Your Way Around MapSource

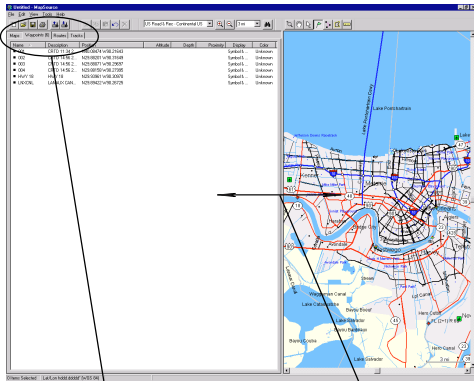


Undocking the Toolbars

The File, Edit, View and Tools toolbars can be undocked and moved around the application for your convenience. To undock a toolbar, place the mouse pointer over an open area on the toolbar, click and hold the left mouse button and move the toolbar to a different location. To return it to its starting location move it back to the top of the application.

Getting Started

Finding Your Way Around MapSource



Tab Lists

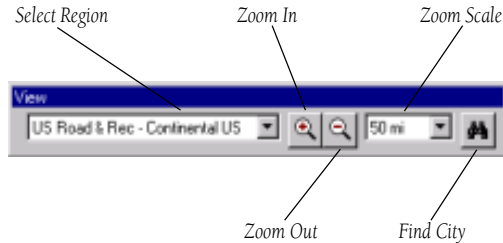
Splitter Bar

Tab Lists

The Tab selects the type of data displayed. To see all of the data it might be necessary to change the position of the Splitter Bar. The Splitter Bar can be moved by clicking and holding the left mouse button on the bar, and dragging it to a new location.

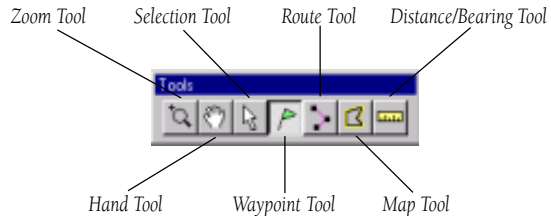
View Toolbar

The View Toolbar contains items found in the View Menu. You can Select a Region to view, Zoom In, Zoom Out, Select a specific Zoom Scale or Find a City to view on the Graphic Map Display.



Tools Toolbar

The Tools Toolbar contains items found in the Tools Menu. You can directly select the Zoom, Hand, Select, Waypoint, Route, Map, and Distance/Bearing Tools. See "Tools Menu" on page 20 for more detailed information.



Tab Lists

The data tabs are located on the left side of the display. When a tab is selected, the data for that item is displayed in list form. When data is created or transferred from the GPS, the tab list for the data item is automatically updated. Each tab displays a list of its contents. The Tab List allows you to easily select items for viewing or editing. Data displayed in the Tab Lists can be sorted by column. To sort the data by a specific column, click on the column header. An arrow will appear, showing the direction of the sort, ascending or descending.

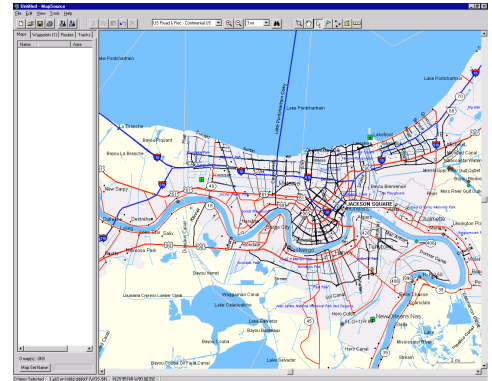
The Graphic Map

The Graphic Map shows the region of the world that is currently selected in the Region Selection Box. You can zoom in and out and move to different parts of the selected region. At large zoom scales, less detail is displayed. At smaller zoom scales, you can see the actual detailed map features that can be transferred to your GPS if your GPS supports this feature.

To pan the Graphic Map, use the scroll bars or the arrow keys. In addition, the Page Up and Page Down keys move the map window up or down by the width of the window. Holding the CTRL key and pressing an arrow key moves by the width of the window in that direction (up, down, left, or right).

Getting Started

Finding Your Way Around MapSource



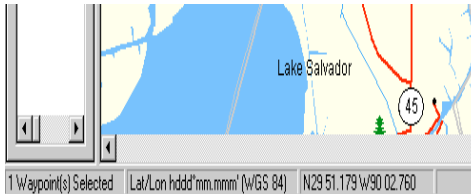
Graphic Map

Getting Started

Status Bar

The Status Bar extends across the bottom of the MapSource window. The Status Bar displays information relating to the current action. The Status Bar can show;

1. Latitude and Longitude of the mouse pointer when the mouse is positioned on the Graphic Map regardless of which tool is selected.
2. The number of tab items that are selected in the Tab List.
3. The current Position Format and Map Datum set in Preferences.
4. The name and approximate data size of the geographical map boundary currently highlighted on the Graphic Map.
5. If the Distance/Bearing tool is selected, the distance and bearing from a beginning point will be displayed in the right panel of the Status Bar.



Status Bar

A Tour through MapSource

This tour is intended to take you through the basic operations of MapSource. You can find more detailed descriptions of the tools and operations in the Reference section of this manual.

This tour presumes that you have MapSource installed, have not changed the default settings of the application and have your GPS connected to a serial port on your computer.

Open the MapSource application by double clicking the MapSource icon located on your desktop. To view a map region from the MapSource data you have loaded, choose *Region* located in the View Menu and pick a region that will display the East Central United States. To view more map detail, set the *Zoom Scale* also located on the View Menu to 2 miles.

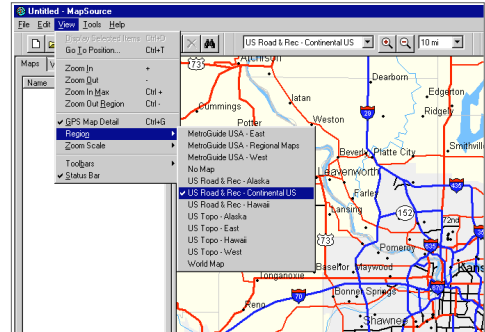
MapSource comes with a sample document file that we will use for this tour, so lets open it and get started! From the File Menu select *Open*. In the MapSource folder, locate the file 'MapSource Tour' and double click it. Notice that each tab now contains some data. At the top of each tab you will see the tab name and in parentheses the number of items contained in the tab list. The *Waypoint* Tab should contain 13 waypoints. Display the *Waypoint* Tab List by clicking on the *Waypoint* Tab.

Waypoints

Let's start by looking at waypoint 001. Select waypoint 001 by clicking on it one time with the left mouse button. From the View Menu, choose *Display Selected Waypoint*, this will center the waypoint on the Graphic Map at the current zoom scale.

Quick Tour

MapSource Tour

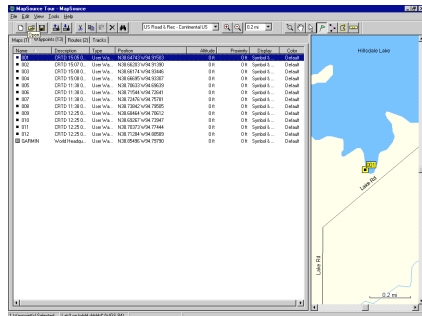


Select a Map Region

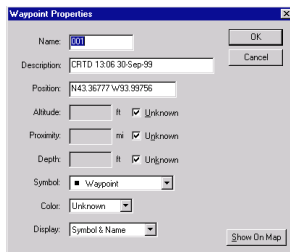
Select a Map Region to view on the Graphic Map Display from the data that you have loaded. If you only have one MapSource product loaded, it will be the only selection in the list.

Quick Tour

MapSource Tour



Waypoint Tab List



Waypoint Properties Dialog Box

Viewing Waypoint Data

There are two places to view waypoint data;

Waypoint Tab List—The Waypoint Tab List displays waypoint data but doesn't allow you to edit the information. It may be necessary to slide the Splitter bar in the middle of the display to the right to see all of the data.

Waypoint Properties—To display the Waypoint Properties, double click on the waypoint in the Waypoint Tab List. The Waypoint Properties Dialog Box allows you to review and edit waypoint data.

Editing Waypoint Properties

With the properties for waypoint 001 displayed, highlight the waypoint name field and type **Boat Ramp** as a new name. Scroll through the symbol list and select the Boat Ramp symbol. To save the changes and view the waypoint on the Graphical Map Display, click the 'Show on Map' button.

Things You Should Know About Waypoint Properties

1. GARMIN GPS products limit the number of characters in a waypoint name. If you transfer a waypoint with a name that exceeds the character limit to the GPS, the GPS will truncate the name. After truncation if more than one waypoint name is the same, only one of the waypoints will be loaded in the GPS.
2. GARMIN GPS products limit the number of characters in the description. If the MapSource description exceeds this limit will be truncated.
3. If you select a symbol that does not exist in your GPS, the waypoint will be represented by a square when transferred into your GPS.

See your GPS Owner's Manual to determine your products limitations.

Creating Waypoints

Creating a new waypoint is as easy as locating a spot on the Graphic Map with your mouse and clicking.

Create a Waypoint Using the Waypoint Tool:

1. Choose the *Waypoint Tool* located in the Tools Menu.
2. Place the mouse pointer over a position on the Graphic Map and click the left mouse button.

Notice that MapSource added a new waypoint to the Waypoint Tab List and assigned a numeric name. Change the waypoint name and symbol by displaying the 'User Waypoint Properties' dialog box.

Moving a Waypoint Using the Selection Tool:

1. Choose the *Selection Tool* located in the Tools Menu.
2. On the Graphic Map, click on the waypoint to select it, then click it again. Do not double click on the waypoint, this will display the Waypoint Properties.
3. Position the mouse pointer at the new location, then click again to anchor the waypoint.

Routes

A route is a collection of waypoints used for navigation. When creating a route on the Graphic Map Display you can use existing waypoints or create new waypoints while creating the route.

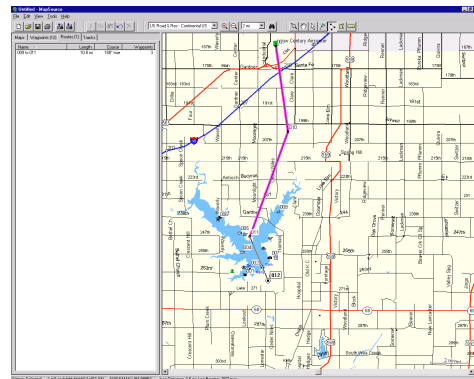
Create a Route Using the Route Tool:

1. Choose the *Route Tool* located in the Tools Menu.
2. Locate waypoint 009 by highlighting it in the Waypoint Tab List then choosing *View Selected Waypoint* located in the View Menu.
3. Set the Zoom Scale to 1.5 miles.

continued

Quick Tour

MapSource Tour

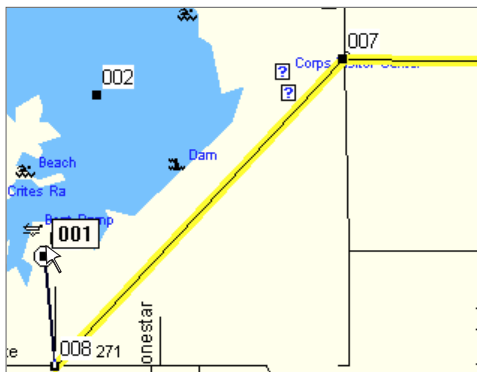


Using the Route Tool

Create a new route by clicking on waypoints in the order that you wish to navigate them. You can create new waypoints while creating the route by clicking on a map location.

Quick Tour

MapSource Tour



Extending a Route

Routes, Continued

4. Place the mouse pointer on waypoint *009*. When the waypoint is selected (there will be a white circle surrounding the waypoint), click on the waypoint. Move the mouse pointer, there will be a line extending from *009* to the mouse pointer location. Click on waypoints *010*, *011* and *012* in that order.
5. Move the mouse pointer to any location on the Graphic Map and click again. A new waypoint is created and added to the route at the location you selected.
6. When you have finished adding waypoints to the route, click the right mouse button to end the route.

Select the *Route Tab*. You can see that a new route has been added. MapSource automatically names the new route using names of the first and last waypoints in the route.

Extending a Route:

1. Using the *Selection Tool* located in the Tools Menu, select the route that you just created by clicking on it with the left mouse button (the route will turn yellow when selected).
2. With the *Selection Tool*, click the first or last waypoint in the route.
3. Click on an existing waypoint or a position on the Graphic Map.
4. When finished extending the route, click the right mouse button to end the operation.

Deleting a Route:

1. Using the *Selection Tool* located in the Tools Menu, select the route that you just finished creating on the Graphic Map.
2. Press the **DELETE** key on the keyboard.

The route will be removed from the Tab List and the Graphic Map. Notice that the route waypoints remain, only the route has been erased.

Map Sets

A Map Set is one or more detailed maps selected from the Graphic Map. Not all GARMIN GPS units can use detailed maps. Please consult your Owner's Manual to determine if your unit has this capability and its limitations. To begin, select the *Maps* Tab.

Creating a Map Set:

1. Choose the *Map Tool* located in the Tools Menu.
2. Place the *Map Tool* inside a boundary area. The area will become outlined in yellow.
3. Click inside the map boundary to add it to the Map Set.

The geographical map boundaries are determined by the MapSource data that you have loaded. Each product has different boundary areas. When the Map Tool is placed inside a map boundary area, that area will become outlined in yellow. If you are having difficulty locating a map boundary area, change your zoom scale and try again.

When you add a map to the Map Set, the Name, Area and the Size of the map are shown in the Maps Tab List. At the bottom of the Maps Tab List you will see the number of maps that have been selected and the required memory for the Map Set. If the Map Set contains a large number of maps or a large memory capacity you may get a warning from MapSource. To remove the warning, reduce the number of maps.

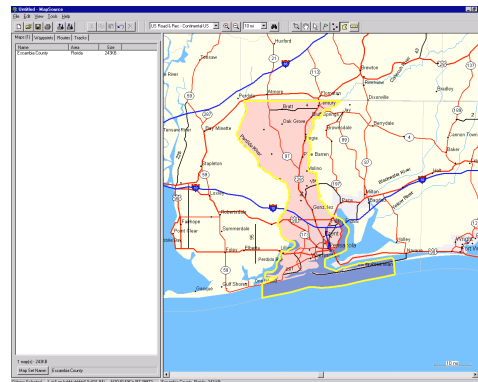
Deleting Maps:

1. Click the map name in the *Maps Tab List* then press the **DELETE** key.

To remove several maps at the same time, hold the **CTRL** key and drag a box around the selected map boundaries. You can also select several maps in the Maps Tab List and press the **DELETE** key.

Quick Tour

MapSource Tour

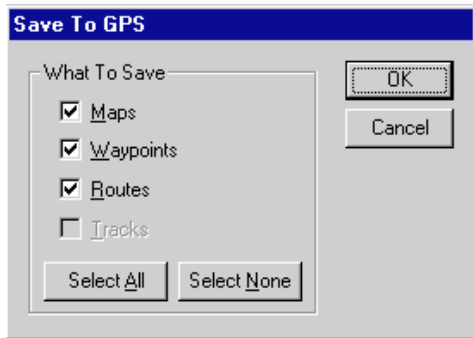


Creating a MapSet

Choose the Map Tool. Place the mouse pointer in the geographical area that you want to select. The area will become outlined in yellow. To select the area and add it to the MapSet, click the left mouse button. When the area is selected it will become shaded in red.

Quick Tour

MapSource Tour



Save To GPS Dialog Box

When transferring data, MapSource will allow you to select the data from the available data types.

Tracks

You cannot create a track in MapSource. If a track log(s) have been transferred from a unit then the Tracks Tab List will display the tracks.

View a Track Log:

1. Select the track log in the Tracks Tab List.
2. Select *Display Selected Track* located in the View Menu

The graphical map will center on the track .

Transferring Data

Saving Data to the GPS:

1. Select *Save to GPS* located on the File Menu.

This will display the *Save To GPS* dialog box. The *Save To GPS* dialog box has several check boxes that allow you to select only the data you want to transfer.

To Select/Deselect a Data Type for Transfer:

1. Click on a checkbox. If the checkbox contains a mark then the data type is selected for transfer.
2. To select all data click the **Select All** button. To deselect all data click the **Select None** button.

When you have the data types selected, (map data takes the longest to load, you may want to deselect it for now) click **OK** to initiate the transfer. As the transfer takes place, a progress indicator will be displayed. When complete, the GPS will display a message indicating the data was successfully transferred.

Transferring Data to MapSource From the GPS:



1. Select *Open from GPS* located in the File Menu.

This will display the *Open From GPS* dialog box. Select the data types to open by placing a mark in the data type checkbox.

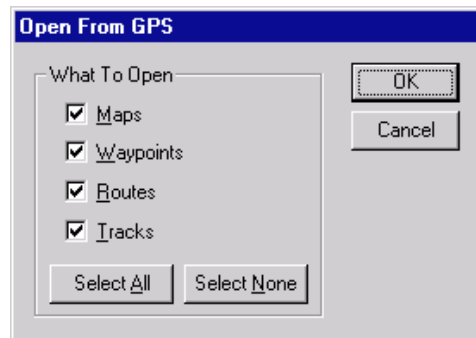
2. Click *OK* to begin the transfer.

When complete, the GPS will display an appropriate message.

If you need more information on a particular function of MapSource consult the Reference section of this manual. Once again thank you for choosing GARMIN.

Quick Tour

MapSource Tour



Open From GPS Dialog Box

File Menu



File Menu

File Menu

New—Opens a new, empty MapSource document.

Open—Opens a previously saved MapSource document.

Save/Save As—Saves the current MapSource document.

Print—Prints the current Graphic Map Display.

Print Preview—Shows a preview of what will be printed. To print the preview, click the Print button at the top of the page.

Print Setup—Activates the Print Setup dialog box.

Open From GPS—This option displays the 'Open from GPS' dialog box and allows you to transfer selected data from the GPS to the computer. Maps, Waypoints, Routes, and Tracks, can be individually selected or selected in any group combination and then transferred for use in the MapSource application. Each data item is selected/deselected by checking/unchecking the box next to it. To 'Select All', or 'Select None' of the data items, click on the buttons at the bottom.

Save To GPS—This option displays the 'Save to GPS' dialog box and allows you to transfer selected MapSource data to the GPS. Maps, User Waypoints, Routes and Tracks can be individually selected or selected in any group combination. To 'Select All', or 'Select None' of the data items, click on the buttons at the bottom. The GPS needs to be turned on to complete this operation. MapSource will indicate progress as the transfer takes place.



GARMIN GPS units are limited in the number of Waypoints, Routes, Tracks and Map Sets that can be stored in the unit. Please refer to your GARMIN GPS Owner's Manual to learn about the limitations of your specific model.

Export—This feature allows the user to export MapSource data in a tab delimited text format for use in a word processor or spreadsheet.

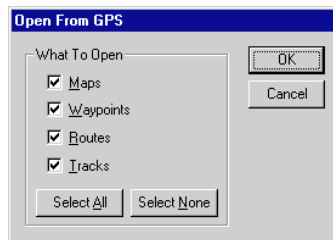
Import—This feature allows the user to open data stored using GARMIN's PCX5 Version 2.09 software. MapSource can display waypoints (.wpt), routes (.rte), tracks (.trk) or one of the maps (.grm) provided with PCX5. If using the PCX5 map (.grm), to avoid screen clutter, turn off any MapSource map data by choosing 'No Map' in the 'Region' menu selection.

Recent Files—This area shows the four most recently used MapSource documents. To quickly reopen one of these documents, click on the document name.

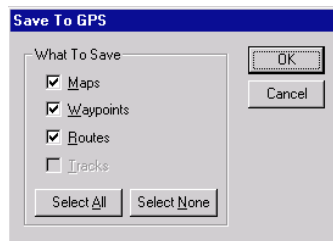
Exit—Closes the MapSource application.

Reference

File Menu



Open From GPS Dialog Box



Save To GPS Dialog Box

Edit Menu

Edit	View	Tools	Help
Undo			Ctrl+Z
Cut			Ctrl+X
Copy			Ctrl+C
Paste			Ctrl+V
New Waypoint...			Ctrl+W
New Route...			Ctrl+R
Duplicate Route			
Delete Waypoint			Del
Remove Waypoint from Route			
Waypoint Properties...			
Select All			Ctrl+A
Preferences...			

Edit Menu

Edit Menu

Undo—Reverts to most recent previous action taken by the user.

Cut, Copy, Paste—These functions work like many other Windows programs. You may cut or copy any MapSource list information to the Windows clipboard for the following purposes:

1. To paste data from one active MapSource document to another active MapSource document.
2. To paste MapSource information into a word processor, simple text editor, or a spreadsheet program in tab-delimited text format.

New Waypoint—Displays the 'User Waypoint Properties'. MapSource will assign a numeric name to the new waypoint. You can change the waypoint name, add a description, change the position, assign an altitude, enter a proximity distance, choose a symbol, select display colors (if you have a color unit), and set the display options for the waypoint. When you are finished, click the 'OK' button to add it to the waypoint list and graphical map. If you would like to center the graphical map on the new waypoint, click 'Show on Map'. This will add the waypoint to the waypoint list, and center the graphical map on the waypoint at the zoom scale you have selected.

New Route—Displays the 'Route Properties' dialog box. To create a new route, click the 'Insert Waypoint' button and select a waypoint from the list. Continue inserting waypoints in the order that navigation will take place. When the last waypoint has been inserted, click 'OK' to add the new route to the 'Route' Tab List. If you wish to save and view the new route on the Graphic Map, click 'Show on Map'. When you create a route, MapSource will automatically assign a name based on the first and last waypoints in the route. To change the route name uncheck the 'Autoname' box. This will activate the name field and you can type in a new route name.

Duplicate Route—Duplicates the selected route in the route list.

Delete—Deletes Waypoint(s), Route(s), Track(s) or Map Set data selected in the tab list or on the Graphical Map Display.

Remove Waypoint from Route—Removes a selected waypoint from the route. See “Editing Routes” on page 33 for more information.

Properties—Activates the Route or Waypoint or Track Properties dialog box depending on the data item that is selected.

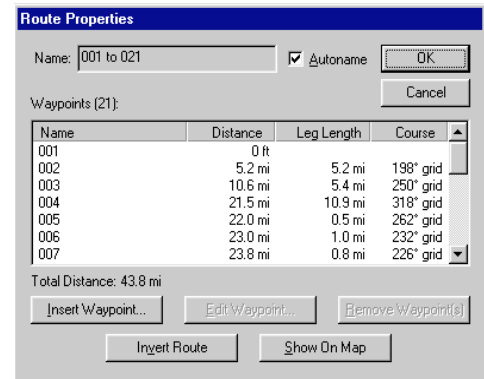
Select All—Selects all active Tab data in the Tab List and on the Graphic Map Display.

Preferences

Port—Selects the COM port used for communication with your GARMIN GPS via the PC Interface cable. COM 1 through COM 8 are provided as selections. Some computers use different names for the serial communication ports, so you may be required to manually type the name of the serial port. MapSource has the ability to search for and automatically select the port where the GARMIN GPS is connected. To have MapSource automatically select the communication port, make sure the GPS is connected and turned on. Click the ‘Auto Detect’ button. MapSource will display the progress of the search and will inform you when a connection has been made. Click **OK** to accept the port selection.

Baud Rate—This option selects the baud rate used to transfer data to and from your GPS. “Automatic” is the recommended selection. In this case, the computer and the GPS negotiate the highest possible baud rate. If you consistently observe operation at 9600 baud, you may wish to manually select a baud rate that works best for your computer.

Edit Menu

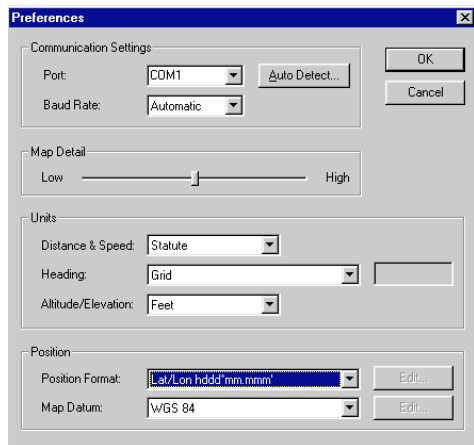


Route Properties Dialog Box

The Route Properties dialog box can be used to create new routes or modify existing routes.

Reference

Edit Menu Preferences



Preferences Dialog Box

Map Detail—This is a slider control that allows you to adjust the amount of detail displayed on the Graphic Map. This does not affect the amount of detail transferred to the GPS.

Distance/Speed—You can select from Statute, Nautical or Metric. All distance or speed measurements will reflect this setting.

Heading—The Heading option allows you to choose Magnetic, True, User or Grid as a heading. *Magnetic* will automatically calculate the magnetic variation for the geographical area. — ‘True’ will show true north headings and ‘User’ allows you to input a magnetic variation. ‘Grid’ provides a true north heading as determined by the Position Format.

Altitude/Elevation—You can select feet or meters to represent these data items.

Position Format—This option allows the user to select from the different formats available.

Map Datum—This option allows the user to select from over 100 different map datums allowing MapSource to easily match up with just about any paper chart or map.

View Menu

Display Selected Items—Displays item(s) selected in the tab list on the Graphical Map. The menu heading will change to reflect the item(s) that have been selected in the tab list. As an example, if a waypoint is selected in the Waypoint Tab List, the menu will read *Display Selected Waypoint*.

Go To Position—Allows you to enter a position to view on the Graphic Map Display.

Zoom In—Decreases the zoom scale, showing a smaller area and more detail.

Reference

Zoom Out—Increases the zoom scale, showing a larger area and less detail.

Zoom In Max—Decreases the zoom scale to the smallest setting, showing the most detail.

Zoom Out Region—Increases the zoom scale to center on the region that is currently selected.

GPS Map Detail—When this menu item is checked, MapSource will show you the actual map info that will be loaded into the GPS.

Unchecking this option will enable faster map drawing, and may reduce the need for the CD-ROM to be in the computer's CD-ROM drive.

Region—Allows you to select a MapSource product and coverage region for display on the Graphic Map. You can select a coverage region from any MapSource product that has been installed on your computer. If you select a region that has been installed, but the corresponding CD-ROM is not in your computer's CD-ROM drive, you may see a message prompting you to insert the proper CD.

Zoom Scale—Allows you to quickly select a zoom scale from a list.

Find City—This tool enables you to locate a city by entering the city name and view it on the Graphic Map Display.

To Find a City by Name and View it on the Graphic Map:

1. Choose the *Find City* Tool.
2. Enter the name of the desired city.
3. Select the city from the list and click the **Center on City** button.

View Menu

<u>D</u> isplay Selected Items...	Ctrl+D
Go <u>T</u> o Position...	Ctrl+T
Zoom <u>I</u> n	+
Zoom <u>O</u> ut	-
Zoom In <u>M</u> ax	Ctrl +
Zoom Out <u>R</u> egion	Ctrl -
<input checked="" type="checkbox"/> <u>G</u> PS Map Detail	Ctrl+G
<u>R</u> egion	▶
<u>Z</u> oom Scale	▶
<u>T</u> oolbars	▶
<input checked="" type="checkbox"/> <u>S</u> tatus Bar	
<u>F</u> ind City	Ctrl+F

View Menu

Reference

Tools Menu

<u>Z</u> oom	z
<u>H</u> and	h
<u>S</u> election	s
<u>W</u> aypoint	w
<u>R</u> oute	r
✓ <u>M</u> ap	m
<u>D</u> istance/Bearing	d

Tools Menu



Only cities in the selected region are listed. For example, if the selected region is Hawaii, cities in the continental U.S. will not be listed.

4. Click the **Center On City** button, double click the city name, or press ENTER to display the city on the Graphic Map Display. It may be necessary to zoom in to see the city name.

Tools Menu

Zoom Tool—This tool enables you to quickly zoom to a specific area on the graphical map.

To zoom in on the graphical map:

1. Select the *Zoom* Tool from the Tools Menu.
2. Click the left mouse button to zoom in by one step and re-center the graphical map on that point.



Holding the CTRL key while clicking the left mouse key will center the Graphic Map without changing the zoom level.

3. To zoom in on a defined area, click and hold the left mouse key and draw a box around the area.

To Zoom Out on the Graphic Map:

1. Clicking the right mouse button will decrease the zoom scale by one step.

Hand Tool—This tool allows you to quickly pan around the Graphic Map Display.

To Pan Around the Graphic Map Display:

1. Place the hand on the graphical map, click and hold the left mouse button and drag the hand around the Graphic Map to view different areas. Release the mouse button to view the area.

Selection Tool—The Selection tool allows you to select items, and edit waypoints and routes directly on the Graphic Map. For more information on editing waypoints and routes, see Editing Waypoints on page 26 or Editing Routes on page 28.

To select an item on the Graphic Map Display:

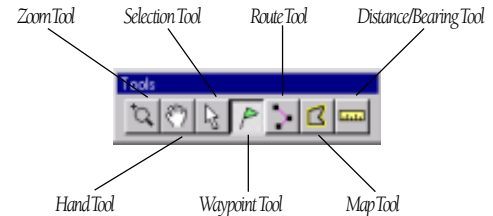
1. Place the *Selection Tool* on the item and click the left mouse button. When the item is selected it will become highlighted in yellow.

Waypoint Tool—The Waypoint Tool allows you to quickly create waypoints on the Graphic Map Display. For detailed information on creating waypoints using the Waypoint Tool, see Creating Waypoints on page 23.

Route Tool—The Route Tool allows you to quickly create, or use existing waypoints on the Graphic Map to determine a route. For more detailed information on creating routes using the Route Tool see Creating Routes on page 27.

Reference

Tools Menu



'Tool' Toolbar

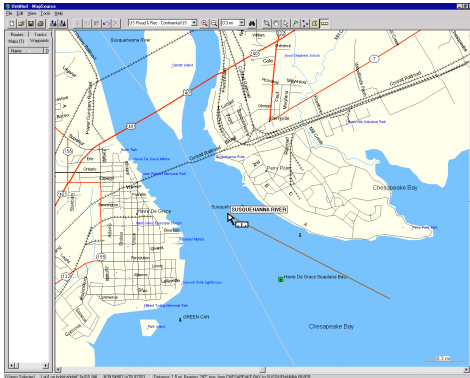
The tools available in the 'Tools' menu can be accessed through toolbar shortcuts or keyboard shortcuts. To activate a tool, click the shortcut on the toolbar or press the letter that corresponds with the tool on the keyboard.

Tools Keyboard Shortcuts

Zoom — z
Hand — h
Selection — s
Waypoint — w
Route — r
Map — m
Distance/Bearing — d

Reference

Tools Menu (cont)



Distance/Bearing Tool

When using the Distance/Bearing tool, the distance and bearing from a beginning point to the cursor will be displayed in the Status Bar at the bottom of the MapSource application window.

Map Tool—This tool allows you to add and remove maps from the Map Set.

To add a map to the Map Set:

1. Place the *Map Tool* within a geographical boundary. The map boundary will become outlined in yellow if the boundary is in view.
2. Click the left mouse button to add a single map to the Map Set.
3. To select several maps at a time, click and hold the left mouse button and draw a rectangle. All maps touching the rectangle will be selected. After a map has been added to the Map Set it will be shaded in red.

To remove a map from the Map Set:

1. Click the left mouse button on a red-shaded map to remove it from the Map Set.
2. To remove several maps at a time, hold **CTRL** then click and hold the left mouse button and draw a rectangle around the area that you want to remove. All maps touching the rectangle will be removed from the Map Set.

Distance/Bearing Tool—The Distance/Bearing Tool allows you to determine the distance and bearing from one point to another on the Graphic Map.

To determine a distance and bearing:

1. Place the *Distance/Bearing Tool* at a point on the Graphic Map and click the left mouse button.
2. Move the tool to another location and click the left mouse button. The distance and bearing from the starting point to the finishing point will be displayed in the status bar along the bottom of the MapSource application.

Help Menu

Contents—Displays the Help Contents tab.

Index—Displays the Help Index tab.

About MapSource—Displays the About Box. The About Box contains information about the MapSource application. Application and Data versions and Installed products can be determined on this page.

Creating Waypoints

A Waypoint is a geographic location stored in memory. Waypoints can be created in MapSource using the Waypoint Tool or the Waypoint Properties dialog box. When a waypoint is created, MapSource will automatically assign a name to the waypoint. If you have created the waypoint on a map feature, the waypoint name will be an abbreviation of the feature. If the waypoint is created on an open location, MapSource will assign a numeric name to the waypoint. All waypoint properties can be changed allowing you to customize the waypoint for display and use.

Create a Waypoint Using the Waypoint Tool

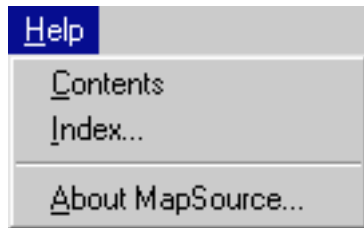
There are three ways to select the Waypoint Tool:

1. By choosing *Waypoint* in the Tools Menu
2. By selecting the *Waypoint Tool* on the Tools Toolbar
3. By using the keyboard shortcut **w**.

When the Waypoint Tool is selected, a flag similar to the Waypoint Tool icon will be displayed beside the mouse pointer on the graphical map.

Reference

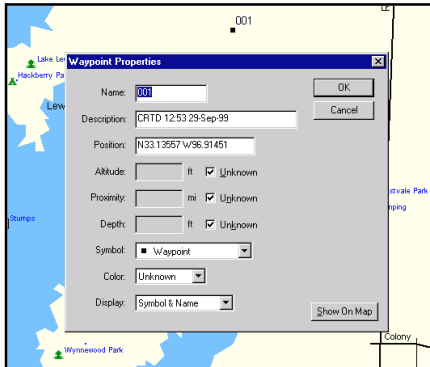
Help Menu



Help Menu

Reference

Creating Waypoints



Creating a Waypoint

When you create a Waypoint on the Graphic Map the Waypoint Properties are displayed. To accept the new waypoint as is, press 'OK' or 'Show On Map'. To reject the waypoint click on 'Cancel'

Create a Waypoint on the Graphic Map:

1. Position the mouse pointer at a location on the Graphic Map.
2. Click the left mouse button.

The *Waypoint Properties* dialog box will be displayed. To accept the waypoint as is, click the **OK** or **Show On Map** buttons. To reject the waypoint click **Cancel**.

Create a Waypoint with the Waypoint Properties

Choose **New Waypoint** located in the Edit Menu. This will display the *Waypoint Properties* dialog box. MapSource will assign a name and location based on the center of the Graphic Map. You can enter a new name, change the description, enter a new position, enter an altitude, assign a proximity range, assign a depth (sounder products only), select a symbol, select a waypoint display color (not all units can display in different colors) and determine what information will be displayed on the map.

Things to Remember:

1. When changing the name or description, remember that GARMIN GPS products can only display a limited number of characters. The name or description will be truncated in the GPS if it exceeds the unit's limit. If multiple waypoints have identical names after truncation, only one of the waypoints will be stored in the GPS. Refer to your GPS Owner's Manual to determine your GPS's limitations.
2. All MapSource waypoints can contain proximity information. If your GPS is capable of using proximity waypoints and new waypoints that contain a proximity range are saved to your GPS, then all waypoints in the GPS unit's proximity list will be deleted and replaced with the new MapSource waypoints.

Editing Waypoints

To edit a waypoint you have to display the *Waypoint Properties* dialog box. To display the *Waypoint Properties* dialog box, double click on the waypoint in the Waypoint Tab List or on the Graphic Map with the Selection Tool. There are nine properties that can be modified, the Name, Description, Position, Altitude, Depth, Proximity Range, Symbol, Color, and Display.

Name—Most GARMIN GPS systems limit the name to six characters. If the length of the name exceeds the limitations of your unit, the name will be truncated.

Description—A description can be entered to help identify the waypoint. GARMIN GPS systems have a maximum number of characters allowed in the description field. If the description that you enter exceeds the unit limitation, the description will be truncated. Please refer to the GPS systems Owner's Manual to determine your unit's limitations.

Position—The coordinates of the waypoint are displayed in the Position field. The coordinates will be displayed in the Position Format selected in Preferences.

Altitude—If known, you can enter an altitude for the waypoint. If the altitude is unknown, place a mark in the *Unknown* checkbox.

Proximity—You can enter a range for a proximity warning. This property is not used by all GARMIN GPS systems. If you don't want to include Proximity data or your unit is not compatible with proximity data, place a mark in the *Unknown* checkbox.

Depth—You can enter a depth for underwater waypoints. This is only compatible with GPS/Sounder combination units. If the depth is unknown or your unit is not compatible, place a mark in the *Unknown* checkbox.

Creating Waypoints

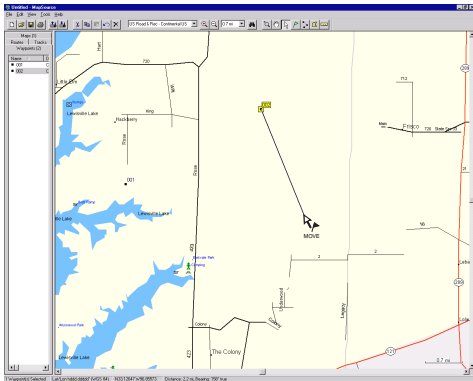
The screenshot shows the 'Waypoint Properties' dialog box with the following values:

- Name: 001
- Description: CRTD 13:10 30-Sep-99
- Position: N42.64492 W94.64760
- Altitude: [] ft Unknown
- Proximity: [] mi Unknown
- Depth: [] ft Unknown
- Symbol: Waypoint
- Color: Unknown
- Display: Symbol & Name

Waypoint Properties Dialog Box

Reference

Editing Waypoints



Moving a Waypoint

Symbol—Allows you to choose from over 100 different symbols. If you select a symbol that is not supported by your GPS system it will be represented with a square symbol.

Color—This property allows the user to select either red, green or blue for the waypoint. This property does not apply to all GARMIN GPS systems. Please refer to your GPS systems Owner's Manual to determine if your unit is capable of displaying waypoint colors.

Display—Allows you to choose how the waypoint will be displayed. There are three settings to choose from, Symbol only, Symbol and Name or Symbol and Description

Moving a Waypoint on the Graphic Map Display:

To move the location of an existing waypoint on the Graphic Map.

1. Choose the *Selection Tool* located on the Tool Bar or in the Tools Menu.
2. Click the left mouse button on the waypoint to select it, then click on it again. Do not double click the waypoint, double clicking the waypoint will display the Waypoint Properties.
3. Move the mouse pointer to the new location and click the left mouse button to anchor the waypoint.

Deleting Waypoints

You can delete a waypoint on the Graphic Map or in the Waypoint Tab List.

Deleting a Waypoint on the Map or Waypoint Tab:

1. Select the waypoint using the *Selection Tool*, then press the **Delete** key or select *Delete Waypoints* located in the Edit Menu.
2. To delete multiple waypoints at the same time, draw a box around the waypoints or hold down the **Shift** key while selecting the waypoints individually. After the waypoints are selected press the **Delete** key or select *Delete Waypoints* located in the Edit Menu.

Creating Routes

There are two ways to create a new route in MapSource, on the Graphic Map or by using the *Route Properties* dialog box.

Creating a Route with the Route Tool

Three Ways to Select the Route Tool:

1. By choosing *Route* located in the Tool Menu.
2. Select the *Route Tool* on the Tools toolbar.
3. By using the keyboard shortcut **r**.

After selecting the Route Tool, click the waypoints in the sequence you want them to appear in the route. If there is not a waypoint where you click, a new waypoint will be created at that location. As you continue, route legs will be created from location to location. When you have entered all of the points that you want in the route, press **ESCAPE** to end the route. A route will be created and automatically named using the names of the first and last waypoints.

Creating a Route with the Route Properties

Begin by selecting *New Route* from the Edit Menu, this will display the *Route Properties* dialog box.

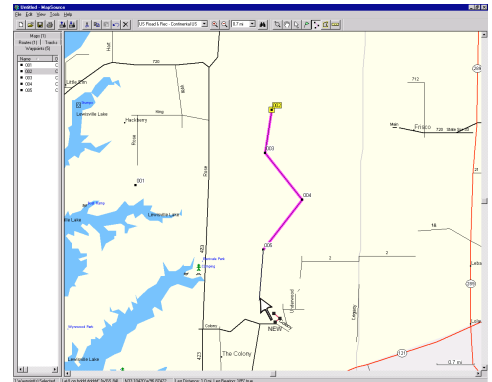
Adding Waypoints to the Route:

1. Click **Insert Waypoint** to display the *Select Waypoint* dialog box.
2. Select the waypoint that you want to insert then click **OK**.

Repeat the process, choosing the waypoints in the order that you wish to navigate them.

Reference

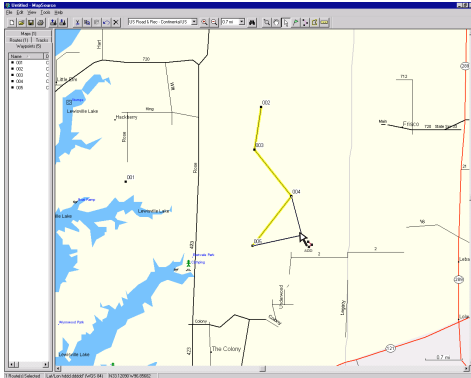
Creating Routes



Creating a Route with the Route Tool

Reference

Editing Routes



Adding a Waypoint to a Route Leg

To add a waypoint to a route leg, Select the route with the Selection Tool. Click the leg that you want to add the waypoint on and stretch the rubberband to the new location or waypoint. When you have selected the location, click again to anchor the route leg on the new point.

Naming a Route

If the *Autoname* checkbox is marked, MapSource will automatically name the route using the names of the first and last waypoints entered in the route. To enter a different name, remove the mark from the *Autoname* checkbox.

Inverting a Route

You can reverse the order of the route waypoints by clicking the **Invert Route** button. This feature is convenient when you want to navigate a route in the reverse direction. When finished, click **OK** or **Show on Map** to save the route.

Editing Routes

Editing a Route Using the Selection Tool

Adding waypoints to an existing route:

1. Choose the *Selection Tool* located in the Tool Menu.
2. Select the route by clicking on it with the left mouse button. When the route is selected it will be displayed in yellow.
3. Click the route leg that you want to add the waypoint on. This will cause the route leg to Rubberband, allowing you to stretch it to an existing waypoint or a map location.
4. When you have the mouse pointer positioned, click the left mouse button to add the point to the route leg.

Extending a Route:

1. Choose the *Selection Tool* located in the Tool Menu.
2. Select the route using the *Selection Tool* located in the Tools Menu. When selected, the route will be displayed in yellow.
3. Click on the first or last waypoint in the route.
4. Move the extension line to an existing waypoint or a map location and click the left mouse button to anchor the route leg.

Removing a Waypoint From a Route:

1. Choose the *Selection Tool* located in the Tools Menu.
2. Select the route by clicking on it with the left mouse button.
3. With the mouse pointer located on the waypoint that you want to remove, click the left mouse button.
4. Choose *Remove Waypoint from Route* located in the Edit Menu.

Editing a Route Using the Route Properties:

1. Select the route in the Route Tab List or on the Graphic Map.
2. Choose *Route Properties* located in the Edit Menu to display the *Route Properties* dialog box.

Name—To change the route name, make sure the *Autoname* checkbox is not marked then type in a new name.

Adding a Waypoint—To add a waypoint, click the waypoint in the route list that directly follows the point that you want to add. Click the **Insert Waypoint** button. Select a waypoint from the Waypoint List. The waypoint will be inserted directly before the point you selected in the route.

Removing a Waypoint—To remove a waypoint from a route, select the waypoint on the route list and click the **Remove Waypoint** button.

Editing a Route Waypoint—Select the waypoint in the route list and click the **Edit Waypoint** button. For more information see *Editing User Waypoints* on page 30.

Inverting a Route—The **Invert Route** button will reverse the waypoint order, making the last waypoint become the first waypoint in the route.

Editing Routes

Route Properties

Name: 001 to 021 Autoname

Waypoints (21):

Name	Distance	Leg Length	Course
001	0 ft		
002	5.2 mi	5.2 mi	198° grid
003	10.6 mi	5.4 mi	250° grid
004	21.5 mi	10.9 mi	318° grid
005	22.0 mi	0.5 mi	262° grid
006	23.0 mi	1.0 mi	232° grid
007	23.8 mi	0.8 mi	226° grid

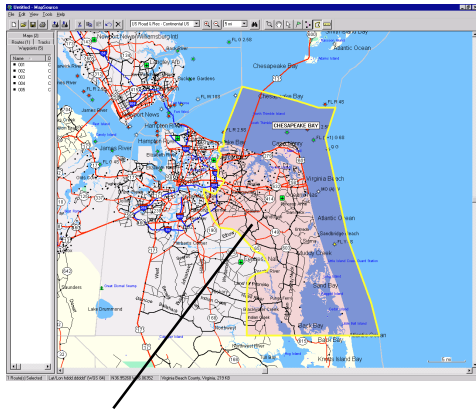
Total Distance: 43.8 mi

Route Properties

The *Route Properties* dialog box can be used to create new routes or modify existing routes.

Reference

Creating Map Sets



Selecting a Detailed Regional Map

When the 'Map' Tool is placed within the boundaries of a detailed map, the border of the detailed map is outlined in yellow. To select the map, click the mouse while the border is selected. When the map is added to the Map Set, the area of the detailed map will be shaded in red.

Creating and Using Map Sets



Not all GARMIN GPS systems can use detailed maps. Check your GPS Owner's Manual to see if your unit is compatible.

What is a Map Set

A Map Set is one or more detailed regional maps selected from the Graphic Map. The regions are determined by the MapSource data that you have loaded. You can select maps from more than one MapSource data source in a Map Set, but you will only see data from one data source.

As an example, if you select Topographical and Roads & Recreational data for the same geographical region you WILL NOT see a combination of topographic and road data. You will only see data from the Roads & Rec data set.

Selecting a Regional Map Using the Map Tool:

1. Select a Zoom Scale that will allow you to view the regional boundaries.
2. Choose the *Map Tool* located in the Tools Menu.

When the *Map Tool* is located in a smaller detailed regional map, the borders of the region will be outlined in yellow and the region name/memory requirement will be displayed in the Status Bar. To select a detailed regional map, click the left mouse button in the selected region. To choose several maps, draw a box through the areas that you want to select. As you select maps they are added to the Maps Tab List. The number of maps, and the memory required to store the maps is displayed at the bottom of the Maps Tab.

Deselecting Regional Maps Using the Map Tool:

1. Choose the *Map Tool* located on the Tools Menu.
2. Place the *Map Tool* inside the border of the region that you want to deselect and click the left mouse button.
3. To remove several maps at once, hold the **CTRL** key and drag a box through the regions on the Graphic Map Display.

Deselecting Regional Maps in the Maps Tab List:

1. Select the Regional Map that you want to remove.
2. Choose *Delete* located in the Edit Menu or press the **Delete** key.
3. To remove several maps at once, drag a box through the regional maps and then press the **Delete** key or choose *Delete* located in the Edit Menu.

Naming a Map Set

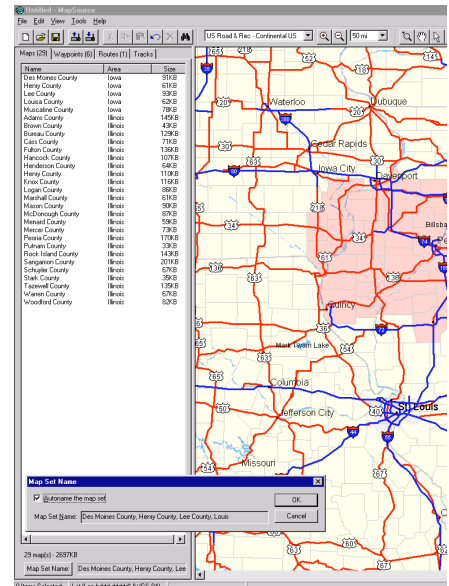
The **Map Set Name** button and Name Field are located along the bottom of the Map Tab List. MapSource will automatically name a Map Set when it is created.

To rename a Map Set:

1. Click the **Map Set Name** button located along the bottom of the Map Tab List.
2. Verify that the Autaname checkbox located on the Map Set Name dialog box is unmarked.
3. Enter a new name in the Name field.

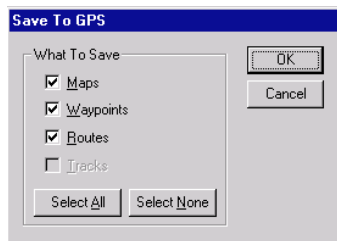
Reference

Map Sets

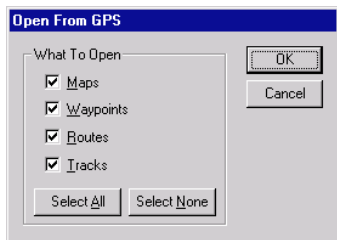


Naming a Map Set

Transferring Data



'Save To GPS' Dialog Box



'Open From GPS' Dialog Box

Transferring Data to the GPS

Transferring MapSource Data to your GPS:

1. Choose *Save to GPS* located in the File Menu.

The *Save to GPS* dialog box will be displayed. Each data type is accompanied by a checkbox. To select a data type for transfer place a mark in the appropriate checkbox. Deselect a data type by removing the mark. Click the *Select All* button to select all data or the *Select None* button to deselect all data.

While the data is being transferred, a progress indicator will be displayed. If you are transferring map sets the data transfer can take up to an hour.

Transferring Data From the GPS

Transferring Data From the GPS to MapSource:

1. Choose *Open from GPS* located in the File Menu.

The *Open From GPS* dialog box will be displayed. Each data type is accompanied by a checkbox. To select a data type for transfer place a mark in the appropriate checkbox. Deselect a data type by removing the mark. Click the *Select All* button to select all data or the *Select None* button to deselect all data.

Saving a MapSource Document

To save a MapSource Document:

1. Choose *Save* located in the File Menu.
2. Select a location for your MapSource document and click the **Save** button.

Opening a Previously Saved Document

To open a previously saved MapSource document:

1. Choose *Open* located in the File Menu.
2. Select the saved document and click the **Open** button.

If you have document open, MapSource will close the open document. If the open document data needs to be saved, MapSource will prompt you before closing the document. Only one document can be open in MapSource at one time. You can run several instances of MapSource simultaneously, allowing you to easily trade information.

Importing a GARMIN PCX5 Data File

To Import GARMIN PCX5 Data:

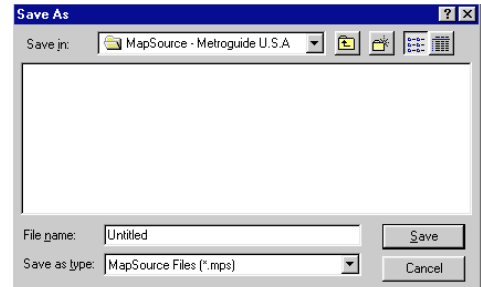
1. Choose *Import* located in the File Menu.
2. Select the PCX5 data file and click the **Open** Button.

MapSource can display PCX5 waypoints (.wpt), routes (.rte), tracks (.trk) or one of the map outlines provided with PCX5 (.gm).

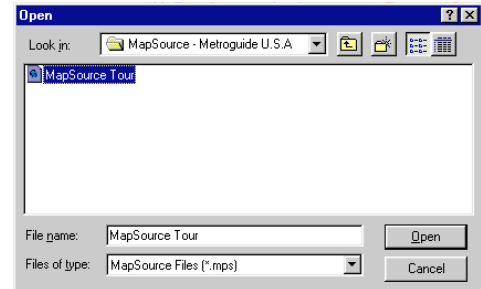


To avoid screen clutter, turn off any MapSource map data, if using a PCX5 map outline.

MapSource Documents



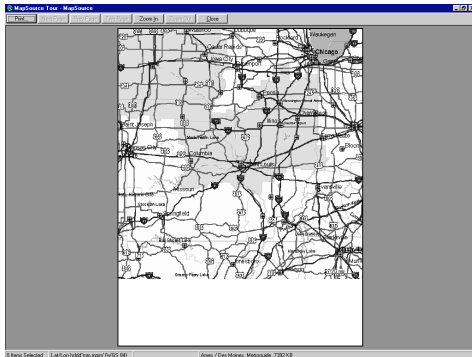
'Save As' Dialog Box



'Open' Dialog Box

Reference

Printing









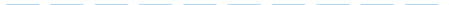







Print Preview

Printing the Graphic Map

Print, Print Preview and Print Setup function like other Windows applications. Use Print Setup to select a printer and set its properties. To preview what will be printed, select Print Preview. To print the current Graphic Map Display, select 'Print' located on the File Menu. Only a representation of the Graphic Map can be printed from MapSource.

Lines

Street Or Roadway	
Ramp	
Arterial Roadway	
Other Through Hwy, State Hwy Or Major Arterial	
Principal Hwy, Us, Or Limited Acc Hwy	
Major Hwy Connector	
Major Hwy	
Stream Or River	
Intermittent/Dry Stream Or River	
Railroad	
Shipping Route	
Land Contour	
Depth Contour	
Political Boundary	






Appendix A





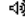



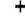
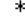

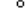
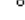
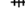


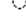
Map Legends

Areas



























	Flat (Tidal, Sand, Gravel, Mud, Etc.)
	Intermittent/Dry River or Lake
	Wetland
	Glaciers
	Golf Course or Park
	Lake, River, Sea, Ocean

Map Legends

-  LIGHTED NAVAID, MULTI-COLORED
-  LIGHTED NAVAID, BLUE
-  LIGHTED NAVAID, VIOLET
-  LIGHTED NAVAID, ORANGE
-  LIGHTED NAVAID, YELLOW OR AMBER
-  LIGHTED NAVAID, GREEN
-  LIGHTED NAVAID, RED
-  LIGHTED NAVAID, WHITE
-  UNLIT NAVAID, MULTI-COLORED
-  UNLIT NAVAID, ORANGE
-  UNLIT NAVAID, YELLOW OR AMBER
-  UNLIT NAVAID, BLACK
-  UNLIT NAVAID, GREEN
-  UNLIT NAVAID, RED
-  UNLIT NAVAID, WHITE
-  UNLIT NAVAID, OTHER OR UNKNOWN COLOR
-  NAVAID, UNKNOWN CLASSIFICATION

-  DAYBEACON, WHITE DIAMOND
-  DAYBEACON, GREEN SQUARE
-  DAYBEACON, RED TRIANGLE
-  RAICON OR RADIO BEACON
-  FOG HORN
-  WRECK, CLEARED BY WIRE-DRUM
-  OBSTRUCTION, CLEARED BY WIRE-DRUM
-  SOUNDING
-  ROCK SUBMERGED AT LOW WATER
-  ROCK AWASH
-  OBSTRUCTION, SUBMERGED
-  OBSTRUCTION, AWASH
-  OBSTRUCTION, VISIBLE AT HIGH WATER
-  SUBMERGED WRECK, NON-DANGEROUS
-  SUBMERGED WRECK, DANGEROUS
-  VISIBLE WRECK
-  UNCLASSIFIED OBSTRUCTION

Map Legends

 Ground Transportation	 Zoos And Aquariums
 Air Transportation	 Parks & Gardens
 Auto Repair	 Schools, Colleges & Universities
 Auto Rental	 Libraries
 Gas Stations	 Museums & History
 Parking	 Amusement Parks
 Lodging	 Movie Theaters
 Campgrounds & Rv Parks	 Bars & Nightclubs
 Dining	 Live Theaters
 Grocery Stores, Shopping	 Golf Courses
 Department Stores	 Marina
 Banks & Atm'S	 Pharmacies
 Post Offices	 Hospital

Map Legends

Points of Interest

 Danger Area	 Showers
 Dam	 Restroom
 Swimming	 Drinking Water
 Skiing	 Boat Ramp
 Scenic Area	 Wreck
 Picnic Area	 Dining
 Park	 Fuel
 Campground	 Fish
 Parking	 Daymark, Red Triangle
 Information	 Daymark, Green Square
 First Aid	 Marina
 Telephone	 Exit
 Airport	 Toll Booth
	 Weigh Station

File Menu

New Document _____ Ctrl + N
 Open Existing Document _____ Ctrl + O
 Save Document _____ Ctrl + S
 Print Graphic Map _____ Ctrl + P
 Open From GPS _____ Ctrl + Shift + O
 Save To GPS _____ Ctrl + Shift + S

Edit Menu

Undo _____ Ctrl + Z
 Cut _____ Ctrl + X
 Copy _____ Ctrl + C
 Paste _____ Ctrl + V
 New Waypoint _____ Ctrl + W
 New Route _____ Ctrl + R
 Delete _____ Del
 Remove Waypoint from Route _____ Ctrl + Del
 Select All _____ Ctrl + A

View Menu

Display Selected Items _____ Ctrl + D
 Go To Position _____ Ctrl + T
 Zoom In _____ +
 Zoom Out _____ -
 Zoom in Max _____ Ctrl +
 Zoom Out Region _____ Ctrl -
 GPS Map Detail _____ Ctrl + G
 Find City _____ Ctrl + F

Keyboard Shortcuts

Tools Menu

Zoom Tool _____ z
 Hand Tool _____ t
 Selection Tool _____ s
 Waypoint Tool _____ w
 Route Tool _____ r
 Map Tool _____ m
 Distance/Bearing Tool _____ d

Index

A	
About MapSource	23
Adding a Waypoint to a Route Leg	28
Altitude/Elevation	18
Auto Detect	2
B	
Baud Rate	17
C	
Caution	i
Color	26
<i>Compatibility</i>	
Map Transfer	1
Waypoint/Route/Track Management	1
Connecting the GPS to a Computer	2
Contents	23
Creating a Map Set	11
Creating a Waypoint	24
Creating and Using Map Sets	30
Creating Waypoints	9
Customer Service	iv
D	
Delete	17
Deleting Maps	11
Deleting Waypoints	26
Depth	25
Description	25
Deselecting Regional Maps	31
Display	26
Display Selected Items	18
Distance/Speed	18
Duplicate Route	17

Index

E

Edit Menu

Cut, Copy, Paste	16
Delete	17
Duplicate Route	17
New Route	16
New Waypoint	16
Preferences	17
Properties	17
Remove Waypoint from Route	17
Select All	17
Undo	16
Edit Toolbar	3
Editing Waypoint Properties	8
Exit	15
Export	15

F

File Menu

New	14
Open	14
Save/Save As	14
Print	14
Print Preview	14
Print Setup	14
Open Form GPS	14
Save To GPS	14
Import	15
Export	15
Exit	15
Recent Files	15
File Toolbar	3
Find City	19

Index

G	
Go To Position	18
GPS Map Detail	19
Graphic Map	5
H	
Heading	18
<i>Help Menu</i>	
About MapSource	23
Contents	23
Index	23
I	
Import	15
Importing a GARMIN PCX5 Data File	33
Index	23
Insert Waypoint	27
Installing the MapSource Software	1
Inverting a Route	28
M	
Map Datum	18
Map Detail	18
Map Sets	11
<i>Creating and Using Map Sets</i>	
Deselecting Regional Maps	31
Naming a Map Set	31
Selecting a Regional Map	30
MapSource Icon	7
MapSource Toolbars	2
Minimum System Requirements	1
Moving a Waypoint	9

Index

N	
Name	25
Naming a Map Set	31
Naming a Route	28
New Route	16
New Waypoint	16, 24
O	
Open From GPS	33
Open From GPS Dialog Box	13
Opening a Previously Saved Document	33
P	
Port	17
Position	25
Position Format	18
<i>Preferences</i>	
Altitude/Elevation	18
Baud Rate	16
Distance/Speed	18
Heading	18
Map Datum	18
Map Detail	18
Port	16
Position Format	18
Print Preview	34
Printing the Graphic Map	34
Properties	17
Proximity	25
R	
Recent Files	15
Region	19
Remove MapSource from Your System	2
Remove Waypoint from Route	17

Index

Rename a Map Set	31
Route Properties	29
Routes	9
Creating a Route with the Route Properties	27
Creating a Route with the Route Tool	27
Adding Waypoints	28
Extending a Route	28
Removing a Waypoint	29
Adding a Waypoint	29
Edit Route Waypoint	29
Insert Waypoint	29
Invert Route	29
Name	29
Remove Waypoint	29
S	
Save To GPS	33
Save To GPS Dialog Box	13
Saving a MapSource Document	33
Saving Data to the GPS	12
Select All	17
Select/Deselect a Data Type	12
Selecting a Regional Map	30
Serial Communications Port	2
SOFTWARE LICENSE AGREEMENT	ii, iii
Status Bar	6
Symbol	26
T	
Tab Lists	5
Table of Contents	v, vi, vii

Index

<i>Toolbars</i>	
Edit Toolbar	3
File Toolbar	3
Tools Toolbar	4
View Toolbar	4
<i>Tools Menu</i>	
Distance/Bearing Tool	22
Hand Tool	21
Map Tool	22
Route Tool	21
Selection Tool	21
Waypoint Tool	21
Zoom Tool	20
Tracks	12
Transfer Data From the GPS to MapSource	32
Transfer MapSource Data to your GPS	13, 32
Transferring Data	12, 33
U	
Undo	16
Using the Route Tool	9
Using the Waypoint Tool	9
V	
View a Track Log	12
<i>View Menu</i>	
Display Selected Items	18
Find City	19
Go To Position	18
GPS Map Detail	19
Region	19
Zoom In	18
Zoom In Max	19
Zoom Out	19

Index

Zoom Out Region	19
Zoom Scale	19
View Toolbar	4
Viewing Waypoint Data	8
W	
Waypoint Properties	8
Waypoint Tab List	8
Waypoints	7
<i>Creating Waypoints</i>	
Create a Waypoint on the Graphic Map	24
Create a Waypoint Using the Waypoint Tool	23
Create a Waypoint with the Waypoint Properties	24
Things to Remember	24
<i>Editing Waypoints</i>	
Altitude	25
Color	26
Depth	25
Description	25
Display	26
Moving a Waypoint on the Graphic Map	26
Name	25
Position	25
Proximity	25
Symbol 2	6
Ways to Select the Route Tool	27
What is a Map Set	30
Z	
Zoom In	18
Zoom In Max	19
Zoom Out	19
Zoom Out Region	19
Zoom Scale	19



©1999 GARMIN Corporation

GARMIN International
1200 East 151st Street, Olathe, Kansas 66062, USA

GARMIN (Europe) Ltd.
Unit 5, The Quadrangle, Abbey Park Industrial Estate, Romsey, SO51 9AQ, U.K.

GARMIN (Asia) Corporation
3rd Floor, No 1, Lane 45, Pao-Hsing Road, Hsin Tien, Taipei, Taiwan

www.garmin.com

Part Number 190-00168-10