



# GPS III PILOT. Quality aviation mapping any way you look at it.

The GPS III PILOT takes its place among the world's best aviation handhelds. This 9 ounce wonder has the same pilot-friendly operations of the GARMIN GPS 90 and the mapping details of GARMIN's GPSMAP 195. Yet the extraordinary GPS III PILOT occupies a unique position — or should we say, *two* positions.

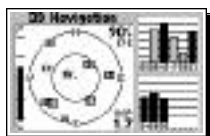
The GPS III PILOT's two-way display can be used in a horizontal configuration atop the glare shield of any aircraft. Or, with the push of a button, changed to a vertical display for use on the yoke or the palm of your hand.

**Map.** The GPS III PILOT basemap with Jeppesen data shows airports, SUAs, cities, highways, railroads, rivers and lakes with the kind of detail only available from a 4-level gray scale display. A 3-D graphic turns your flightplan into a highway in the sky.

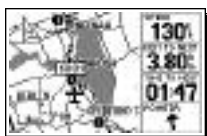
**Performance.** GARMIN's proprietary 12 parallel channel receiver gives you fast satellite acquisition and stays locked on to provide the finest accuracy possible under the toughest conditions or maneuvers.

**Operation.** The GPS III PILOT is easy to use in either the portrait or landscape mode. Fluid scrolling from the rocker keypad and dedicated function keys allow you to fly through its pilot-friendly operating software.

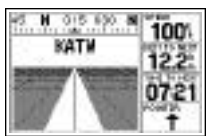
So, no matter how you view the GPS III PILOT — handheld or mounted, primary or backup navigation, Americas or International configuration, vertical or horizontal orientation — there's simply nothing else that compares.



Continuous parallel carrier phase tracking of all satellites in view



Combine map details and data on a pilot-configurable display



Follow your flightplan down an electronic highway



# GPS III PILOT

## Navigation Features

Waypoints:  
Total: 500 each with name, symbol and map display optional  
Nearest: 9 (automatic) continuously updated

Routes: 20 reversible with up to 30 waypoints each, plus TracBack™

Map Datums: Over 106

## Performance

Receiver: 12 parallel channels continuously tracks and uses up to 12 satellites to compute and update position

Acquisition Times:  
Warm: Approx. 15 seconds  
Cold: Approx. 45 seconds  
AutoLocate™: Approx. 5 minutes

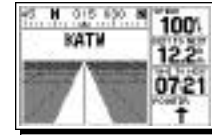
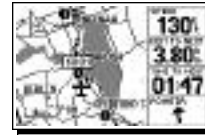
Update Rate: 1/second, continuous

Accuracy:  
Position: 15 meters (49 feet) RMS\*  
Velocity: 0.1 knot RMS steady state

Dynamics: 6g's

Interfaces: NMEA 0183, RTCM 104 DGPS corrections and proprietary GARMIN for all GARMIN panel mounts, PC interface kit and database updates

Antenna: Detachable with standard BNC-type connector



## Physical

Size: 2.32"H x 5"L x 1.62"W (5.9 x 12.7 x 4.1 cm)

Weight: 9 ounces (255g) with batteries

Display: 2.2"W x 1.5"H (5.6 x 3.8 cm) high-contrast electro-luminescent backlit FTN display; switchable orientation

Memory: Internal lithium battery backup lasts up to 10 years

## Power

Source: 4 AA batteries or 10-32vDC

Usage: 0.75 watts – battery life 8 to 10 hours

## Accessories

Standard: GPS III PILOT Receiver  
Dash Mount  
Owner's Manual  
Quick Reference Guide  
Wrist Strap

Optional: Yoke Mount  
Cigarette Lighter Adapter  
Carrying Case  
Suction Cup Antenna Mount  
Power/Data Cable  
PC Interface Kit  
PC Update Cable

## Plotter/Moving Map Features

Database: Built-in Jeppesen®; includes worldwide airports and VOR's, plus Americas, or Atlantic International, or Pacific International NDB's, Intersections, special use and controlled airspace, runway data, plus airport, FSS, and ARTCC frequencies

Base Map: Americas or International; Includes: state/country boundaries, lakes, rivers, railroads, cities, coastlines, US, state, and interstate highways, and local thoroughfares

Plotting Scales: 500 ft to 5000 mile screen width with push-button zoom control

Specifications are preliminary and subject to change without notice.

\* Subject to accuracy degradation to 100m 2DRMS under the United States Department of Defense-imposed Selective Availability Program

© 1997 GARMIN Corporation



GARMIN International  
1200 East 151st Street  
Olathe, Kansas 66062, U.S.A.  
913/397.8200 FAX 913/397.8282

GARMIN (Europe) Ltd.  
Unit 5, The Quadrangle, Abbey Park Industrial Estate  
Romsey, SO51 9AQ, U.K.  
44/1794.519944 FAX 44/1794.519222

GARMIN (Asia) Corporation  
4th Floor, No. 1, Lane 45, Pao-Hsing Road  
Hsin-Tien, Taiwan  
886/2.917.3773 FAX 886/2.917.1758

www.garmin.com