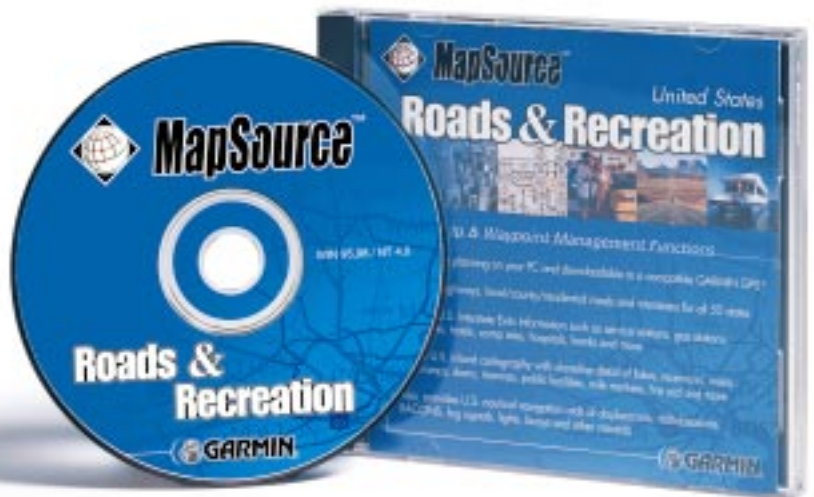




GARMIN has stepped up the mapping capability of its GPS units by offering you MapSource™ — a complete line of CD-ROMs packed with map data you can download to your compatible

Extreme mapping detail is just a click away

GARMIN GPS. For nonmap GARMIN GPS products, MapSource is an excellent tool for creating waypoints and routes on your PC using a background map. Downloadable data includes shoreline detail, residential streets, campgrounds, nautical navigation aids, terrain contour, elevation information and more. Download data from the MetroGuide CD and use your compatible GARMIN GPS to look up addresses and find restaurants, hotels and attractions.



MapSource CD-ROM specifications

- GPS requirements:** MapSource data can be downloaded to these GARMIN map products: GPS III Plus, GPS 12MAP, NavTalk, StreetPilot, StreetPilot ColorMap, eMap, GPSMAP 162, GPSMAP 168 Sounder and GPSMAP 295. Some products also require a data card. Trip and waypoint data can be transferred to most other GARMIN GPS units, excluding GPS 100 series and panel-mount aviation units. See www.garmin.com for compatibility.
- PC interface cable:** Requires separate purchase. Not included with MapSource.
- PC system requirements:**
- Pentium processor
 - Windows 95, Windows 98, or Windows NT 4.0
 - 16 MB minimum RAM
 - 20 MB free hard disk space (for compact installation)
 - CD-ROM drive
 - 256-color display adapter and monitor (24-bit color recommended)
 - Mouse or other pointing device

MapSource product descriptions



MetroGuide U.S.A. (010-10215-03)

- Contains detailed U.S. map with business and residential street names and address lookup capability when loaded to a compatible GARMIN GPS*
- Displays points of interest such as food and drink, lodging, attractions, entertainment, shopping and emergency services
- Contains a map of highways, local roads and interstates and displays interstate exit information such as service stations, restaurants and hotels when loaded to a compatible GARMIN GPS*

*European coverage also available. Go to www.garmin.com to find out which countries are available.
Compatible with StreetPilot, StreetPilot ColorMap, eMap and GPSMAP 295. Requires 8 or 16 MB data card.



U.S. Waterways & Lights (010-10215-05)

- Shows U.S. inland cartography with shoreline detail of lakes, reservoirs, waterways, rivers, boat ramps, dams, facilities and danger areas
- Contains detailed U.S. map with cities, towns, highways, major local roads and interstates for all 50 states
- Displays nautical navigation aids of lights, buoys, sound signals and day beacons
- Provides enhanced coastline detail, including thousands of small islands plus wrecks, obstructions and other hazards



U.S. Roads & Recreation (010-10215-00)

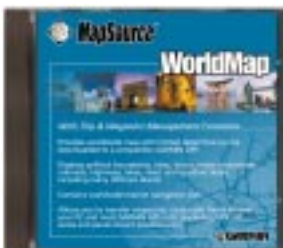
- Contains detailed U.S. map with cities, towns, highways and local roads for 50 states
- Displays U.S. interstate exit information such as service stations, restaurants, hotels, camp sites, hospitals and banks when loaded to a compatible GARMIN GPS
- Shows U.S. inland cartography with shoreline detail of lakes, reservoirs, rivers, boat ramps, marinas, navaid, mile markers and more

European coverage also available. Go to www.garmin.com to find out which countries are available.



U.S. Topography (010-10215-02)

- Features digital topographic maps for the U.S., including Alaska and Hawaii, comparable to the U.S. Geological Survey's 1:100,000 scale paper maps
- Provides terrain contour and elevation information along with roads, trails, summits and some bathymetric contours
- Shows U.S. inland shoreline detail for lakes, reservoirs and rivers with icons to represent boat ramps, dams, facilities, navaid and danger areas



WorldMap (010-10215-01)

- Provides world map with limited detail
- Displays political boundaries, cities, towns, major motorways, railroads, highways, lakes, rivers and coastline detail, including many offshore islands
- Provides worldwide nautical navigation aids of daybeacons, radiobeacons, RACONS, fog signals, lights, buoys and other navaid
- Shows U.S. interstate exit information such as service stations, restaurants, hotels, camp sites, hospitals and banks when loaded to a compatible GARMIN GPS

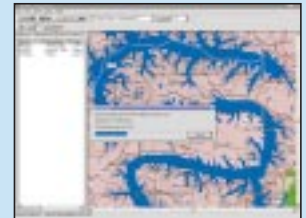
All MapSource titles have a trip and waypoint management function, which allows you to create waypoints and routes on your PC and transfer them to your GARMIN GPS.



Sample: MetroGuide U.S.A.



Sample: U.S. Waterways & Lights



Sample: Downloading data from U.S. Roads & Recreation



Sample: U.S. Topography



Sample: WorldMap

For more screen examples, use our online map viewer at www.garmin.com

© 2000 GARMIN Corporation



GARMIN International
1200 East 151st Street
Olathe, Kansas 66062, U.S.A.
913/397.8200 fax 913/397.8282

GARMIN (Europe) Ltd.
Unit 5, The Quadrangle,
Abbey Park Industrial Estate,
Romsey, SO51 9AQ, U.K.
44/1794.519944 fax 44/1794.519222

GARMIN (Asia) Corporation
No. 68, Jangshu 2nd Rd.
Shijr, Taipei County, Taiwan
886/2.2642.9199 fax 886/2.2642.9099

www.garmin.com

Specifications are and subject to change without notice.

THIS PRODUCT IS INTENDED TO BE USED ONLY AS A TRAVEL AID AND MUST NOT BE USED FOR ANY PURPOSE REQUIRING PRECISE MEASUREMENT OF DIRECTION, DISTANCE, LOCATION OR TOPOGRAPHY.